



Figure 1. A photo of the B1051 taken in February 2024. Showing typical flooding, and associated damage to carriageway and banks adjacent to site Elsenham A76.



Figure 2. Two photos taken of the B1051 in February 2024. Showing typical flooding, with associated erosion adjacent to site Elsenham A76.

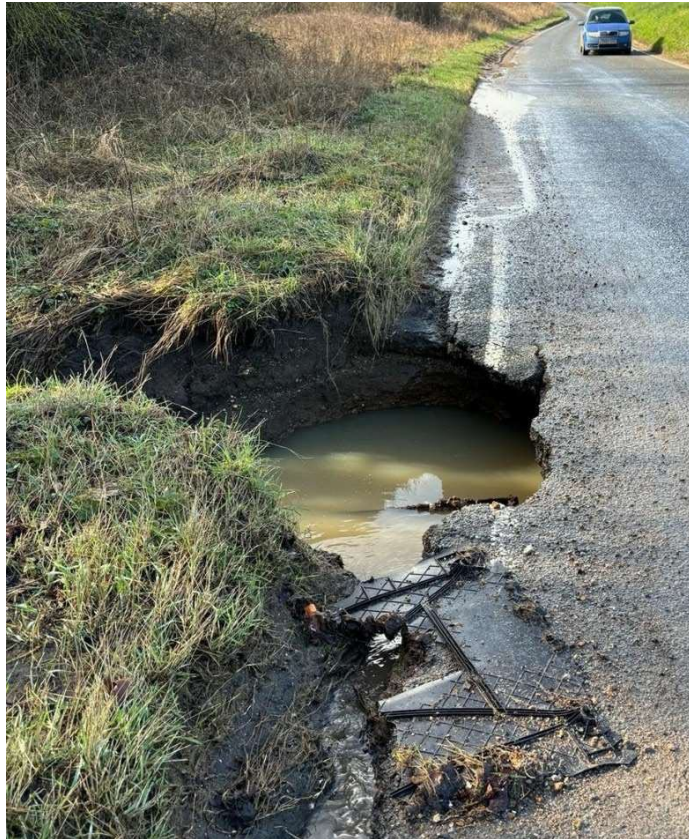


Figure 3. Two photos of the B1051 taken in February 2024. Showing typical flooding, erosion and associated damage to the carriageway and banks adjacent to site Elsenham A76.