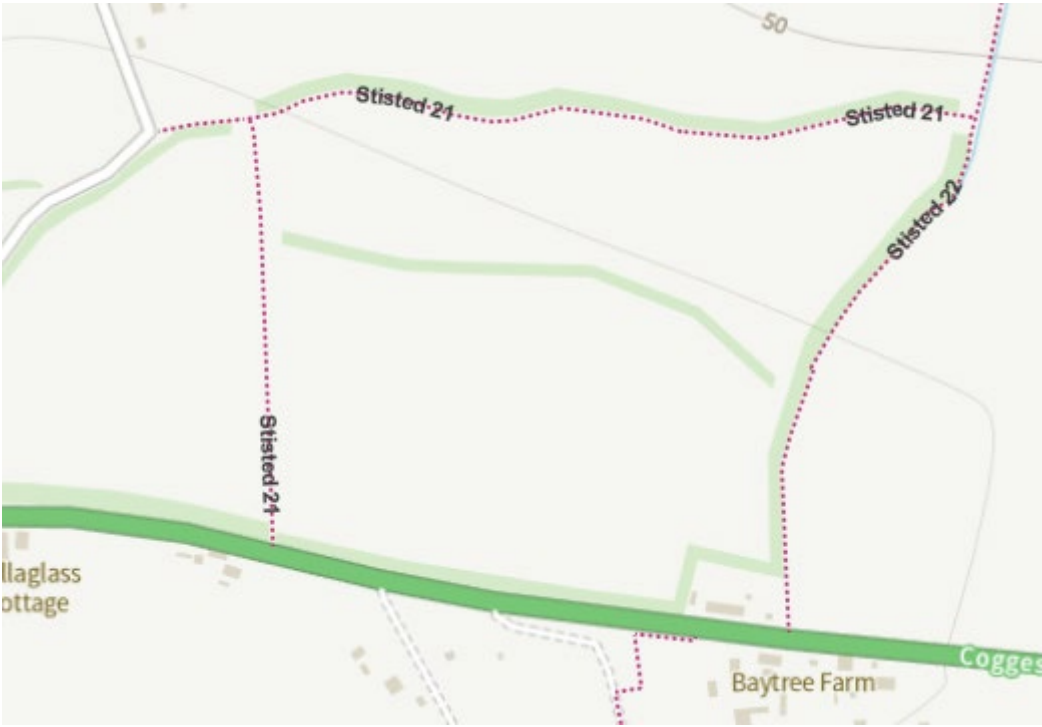


Sensitivity Grade	Description
Red	(iii) Where access to the main road network in accordance with (i) and (ii) below is not feasible, road access via a suitable* existing road prior to gaining access onto the main road network will exceptionally be permitted, having regard to the scale of the development, the capacity and form of the road and an assessment of the impact on road safety (*Mitigation required to make minor road suitable for HGVs is difficult and unlikely to be achieved)
Red/Amber	(iii) Where access to the main road network in accordance with (i) and (ii) below is not feasible, road access via a suitable* existing road prior to gaining access onto the main road network will exceptionally be permitted, having regard to the scale of the development, the capacity and form of the road and an assessment of the impact on road safety (*Mitigation is required to make minor road suitable for HGVs and likely to be achievable)

Part-reproduction of transport site assessment.



Local PROW network

Table 4: Matrix showing derivation of combined sensitivity value

This table shows how the separate landscape and visual sensitivity judgements combine.

Landscape sensitivity	High	MEDIUM	MEDIUM-HIGH	HIGH
	Med	MEDIUM-LOW	MEDIUM	MEDIUM-HIGH
	Low	LOW	MEDIUM-LOW	MEDIUM
		Low	Medium	High
Visual and perceptual sensitivity				