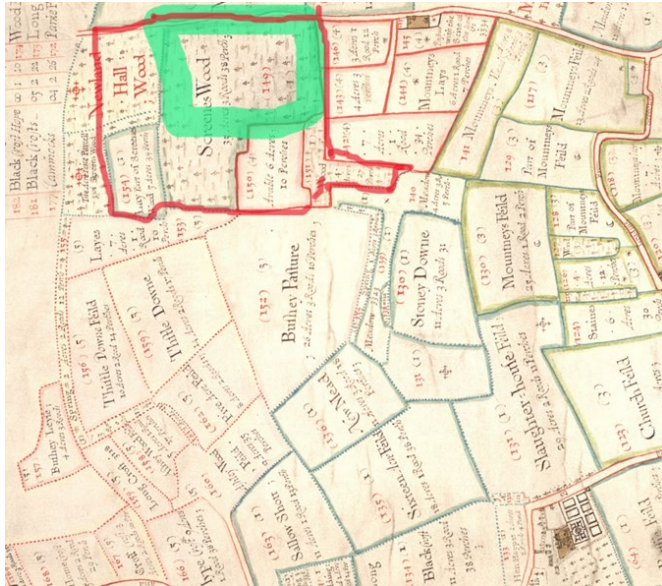


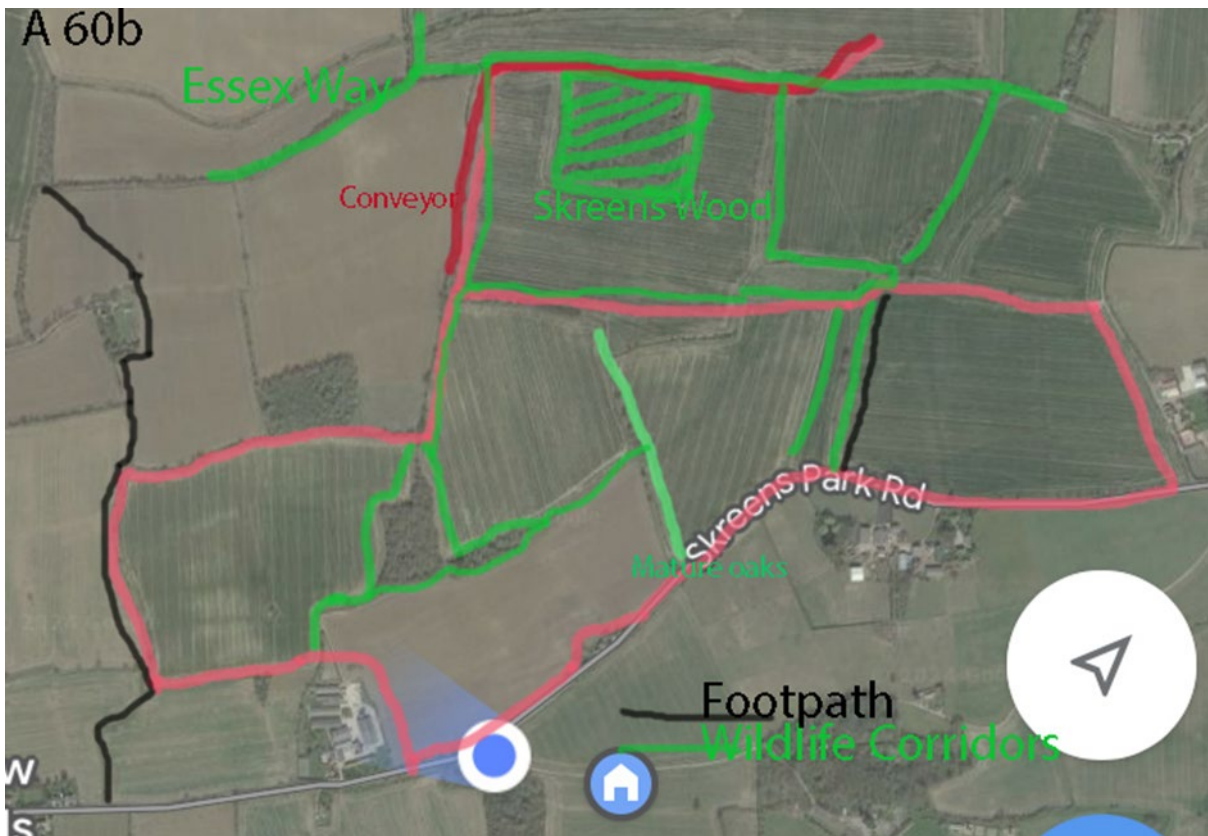
John Hunter (Countryside Planning Officer for ECC from 1970) in *Field Systems in Essex* (Essex Archaeology Society 2003) felt that the Field System of Skreens Park was of such significance that he chose as the front cover of this publication part of the 1666 map of Skreens estate. Part of the 1666 map below shows, in green, how much of this Skreens Wood has survived INTACT since the seventeenth century or earlier. The red line shows this distinctive outline still there.



The first edition Ordnance Survey map shows this outline with the wood intact. It was only in the late 1960s that much of the Skreens wood was uprooted.



The 2014 Minerals review stated this was one arable field. It certainly is not. There is still a complex system of invaluable wildlife corridors remaining. These are shown in green in the map below.



The destruction of the hedgerow of mature oaks west of footpath 17 would seriously reduce biodiversity.

