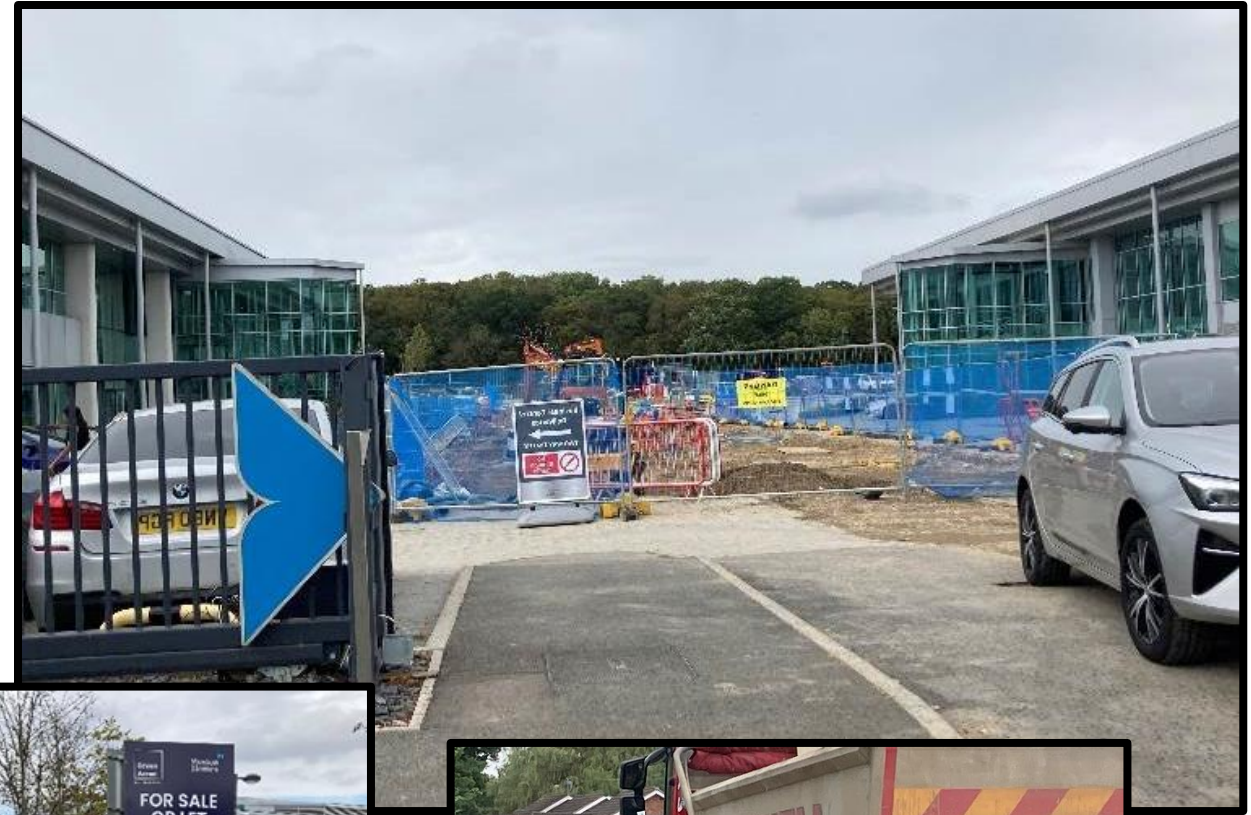


WESTON HOMES ACCESS ROAD
PARSONAGE ROAD TAKELEY

TAKELEY PARISH COUNCIL
15 MINUTE SNAPSHOT ON 14TH
AUGUST 2023 12.45-1.00PM

- HGV ROUTE PERMITTED
- 400 TRIPS PER DAY
- CONSTRUCTION TRAFFIC
- NEW ROUNDABOUT
- NEW CARE HOME
- 450 HOMES



Approved Development

- West of Parsonage Rd 110 homes (under construction with new roundabout)
- West of Garnets 155 homes
- East of Parsonage Rd 66-bed care home
- East of Parsonage Rd 88 homes
- Weston Homes new car park 124 spaces
- Weston Homes 4 x commercial buildings (12 x industrial units plus a small unit for health clinic/surgery)





Access onto Parsonage Road for Proposed 96 Homes