



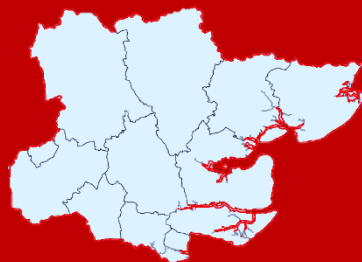
Essex County Council

Indices of Deprivation: 2019

Strategy, Insight & Engagement

The 2019 English Indices of Deprivation

ESSEX



2019

ENGLISH INDICES OF DEPRIVATION

What are the Indices of Deprivation?

What are the Indices of Deprivation?

- A nationally recognised way of assessing extreme and localised deprivation.
- A way of comparing relative deprivation across the country and at the neighbourhood level.

What they are not?

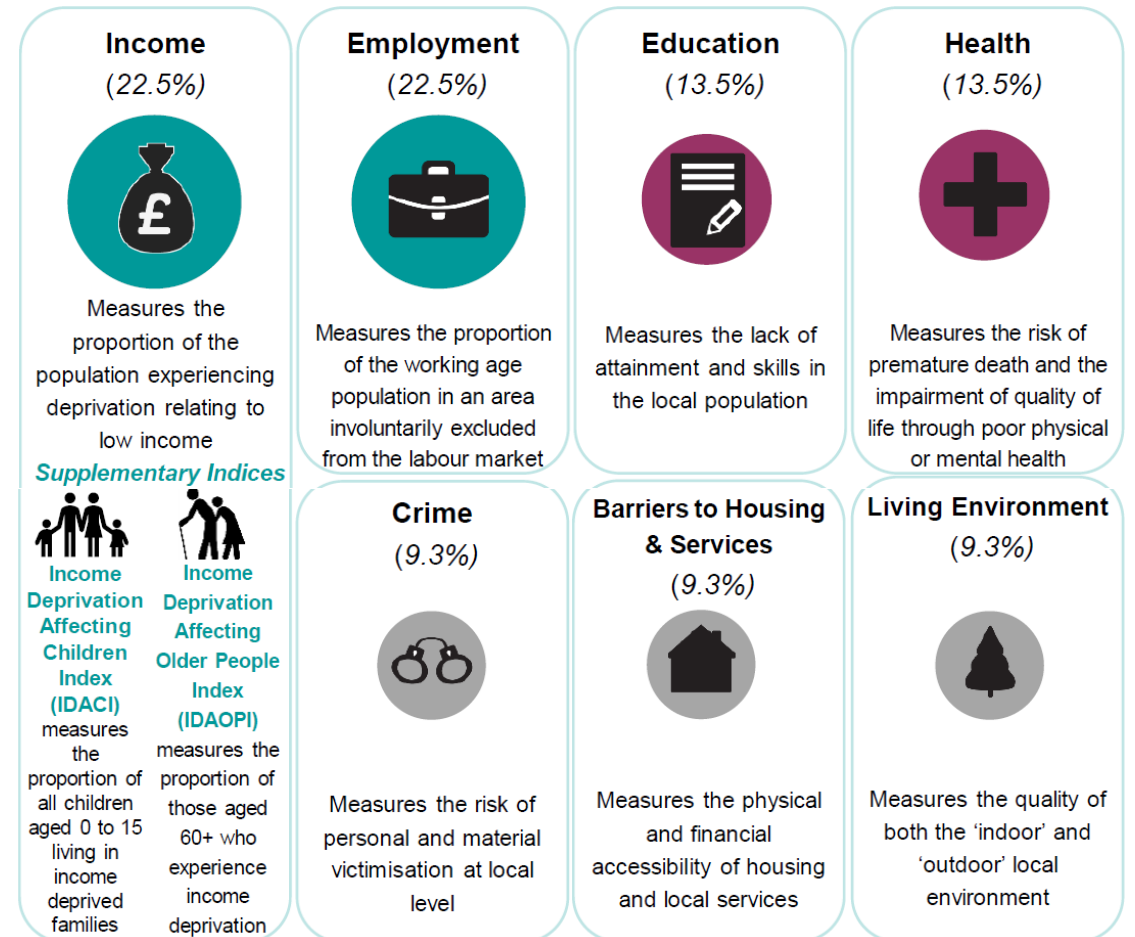
- A measure of absolute change in deprivation
- A tool for identifying deprived people.
- A tool for identifying wealthy areas – the absence of deprivation does not signify affluence.

1st
most
deprived
area



There are 32,844 small areas (Lower-layer Super Output Areas) in England, with an average population of 1,500

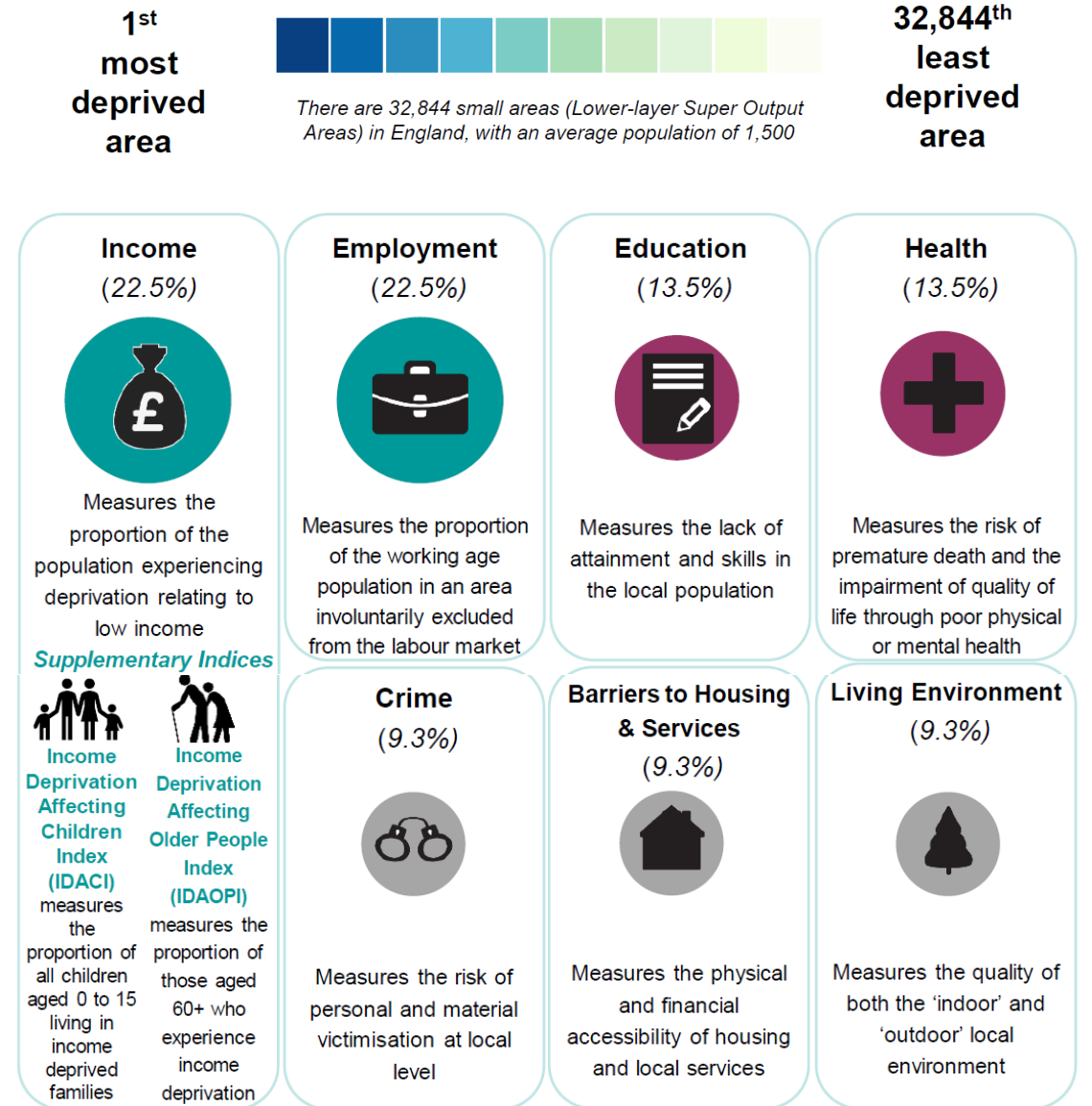
32,844th
least
deprived
area



IoD2019 is based on the **same methodology** as the 2015 Indices.

Understanding the analysis

- The indices rank 32,844 small areas (neighbourhoods) across England.
- There are 872 neighbourhoods in Essex c.1,500 people each
- The indices comprise 39 indicators organised across 7 domains which are combined and weighted to calculate the overall Index of Multiple Deprivation.
- Outputs displayed in deciles (10 equal groups) of deprivation (1-10) and quintiles (5 equal groups of 20%).

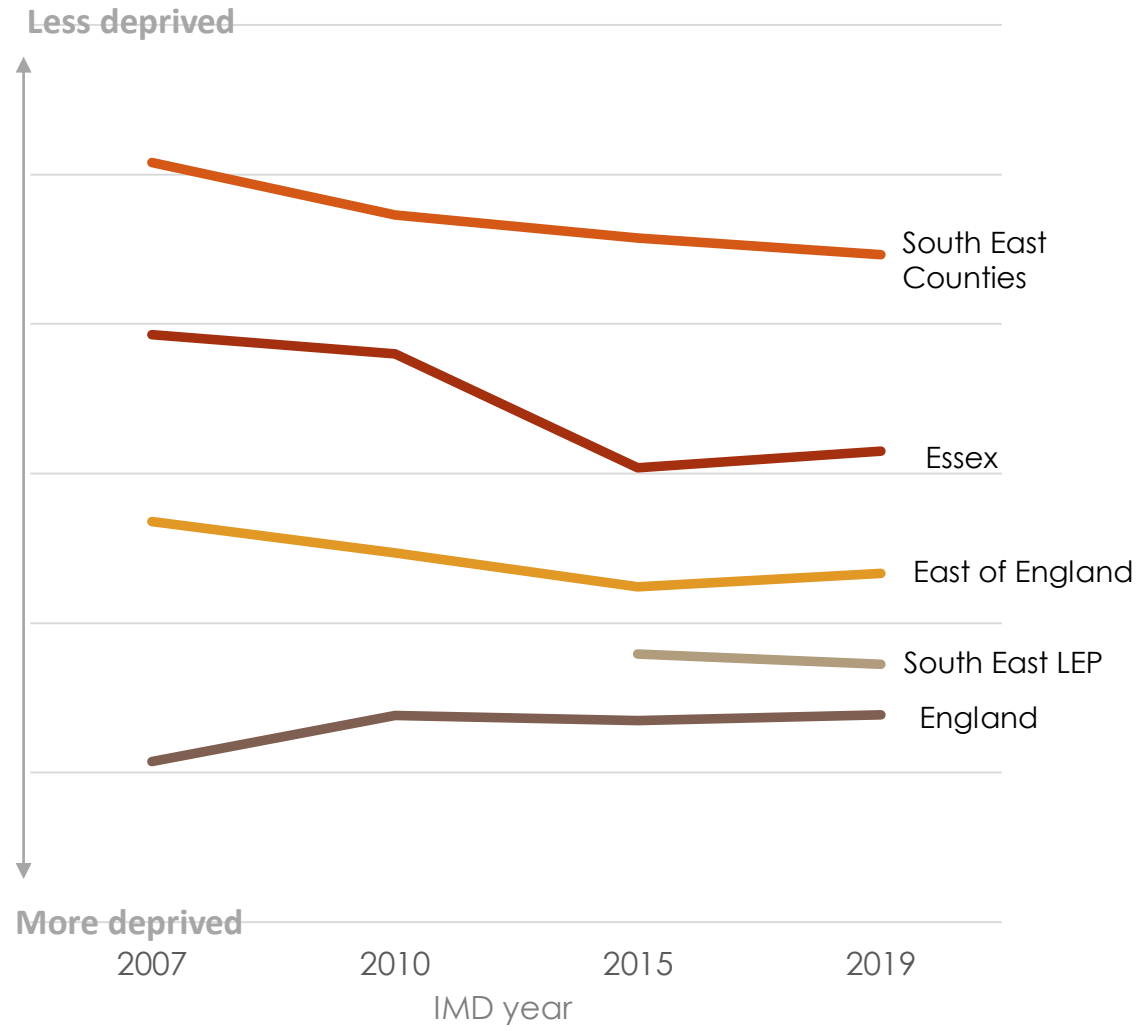


IMD2019 is based on the **same methodology** as IMD 2015.

Essex's place within the national picture

Essex compares favourably with other local authority areas overall.

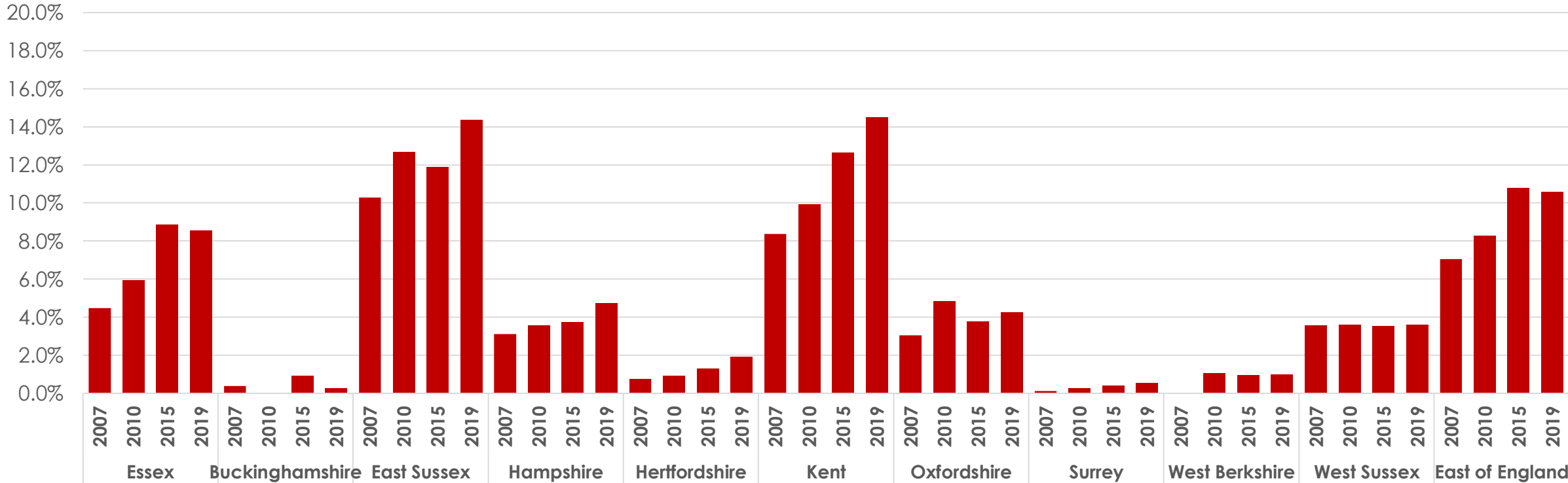
- Essex has lower levels of deprivation than two-thirds of English local authorities
- Over time we have seen:
 - a **decline** in Essex's relative position since **2007**
 - a **steep decline** between **2010-15**
 - a **consolidation** of Essex's position in **2019**



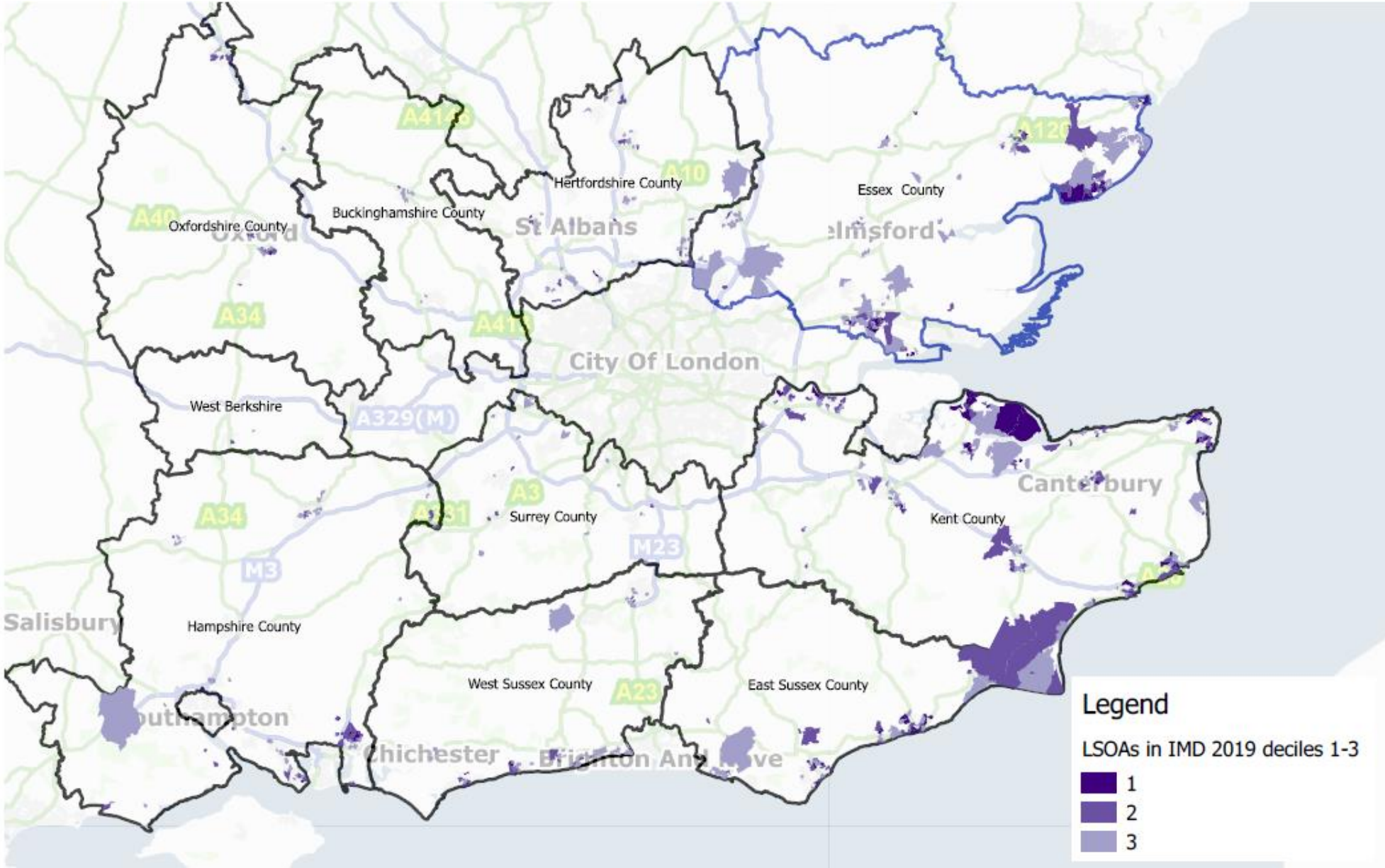
But Essex compares less well against other counties in the South East

- Essex has relatively high levels of deprivation when compared to counties across the South East
- Some counties have no significant populations living in deprived areas
- The percentage of Essex residents living in the most deprived 20% of areas is amongst the highest in the South East – behind only Kent and East Sussex

Proportion of population in most deprived 20%- Essex, SE counties and East of England



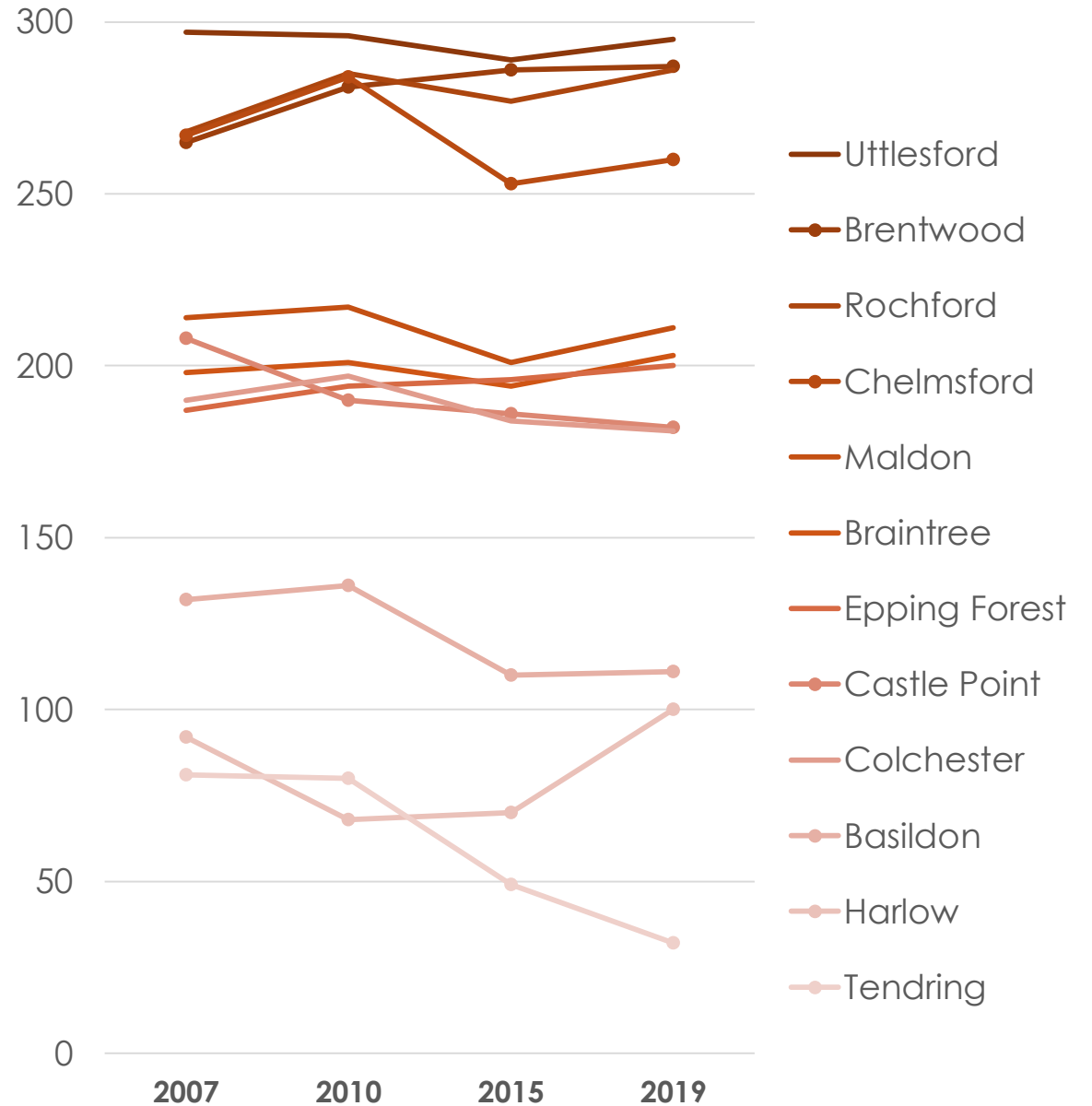
Deprivation across the South East



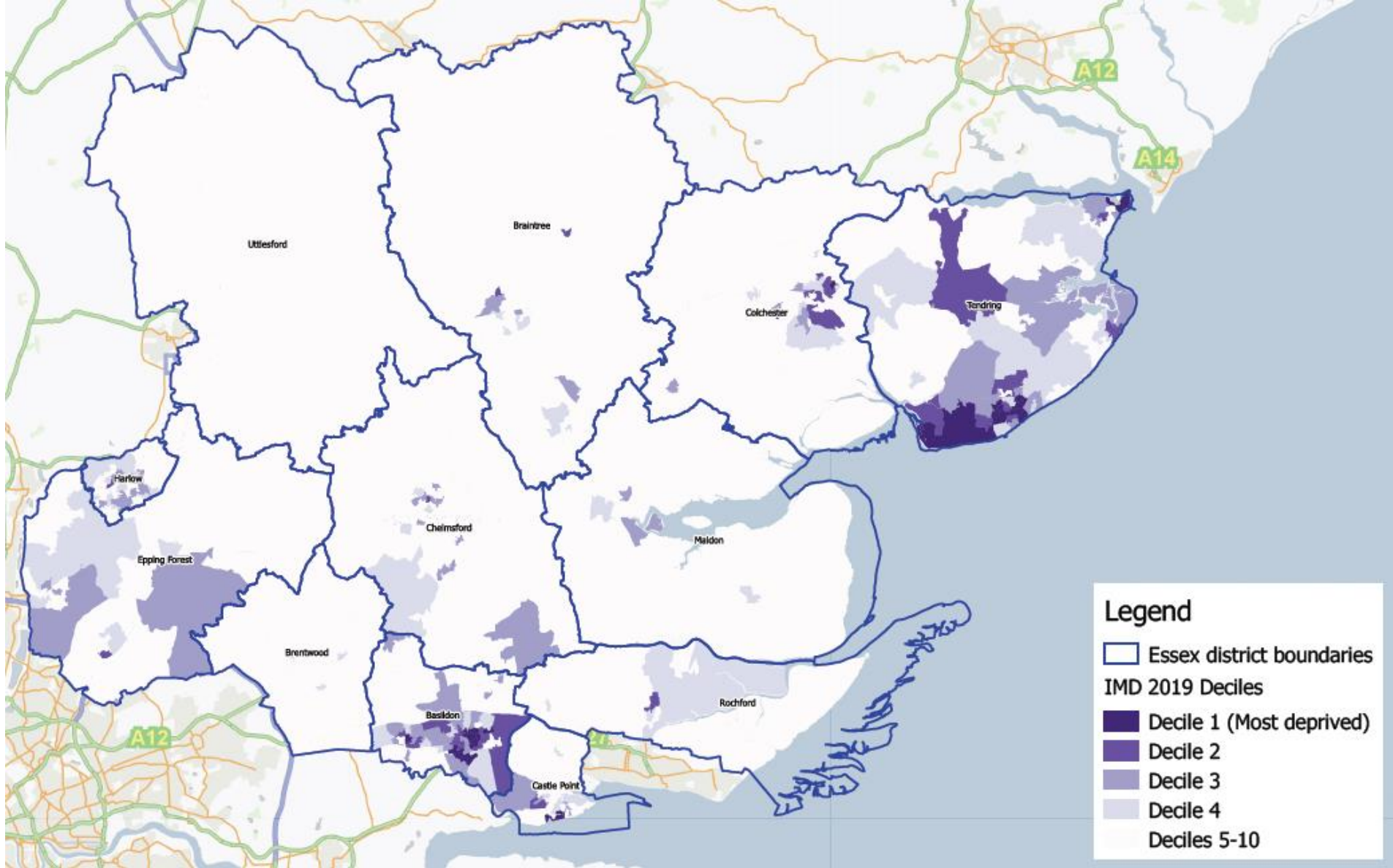
Deprivation in Essex

There is a large and growing gap between the most and least deprived districts

- Most areas in Essex have consolidated their position between 2015 and 2019
- Harlow has seen sustained improvements since 2010
- But there have been consistent and marked declines in Castle Point and Tendring
- Tendring is falling further and further behind the rest of the county



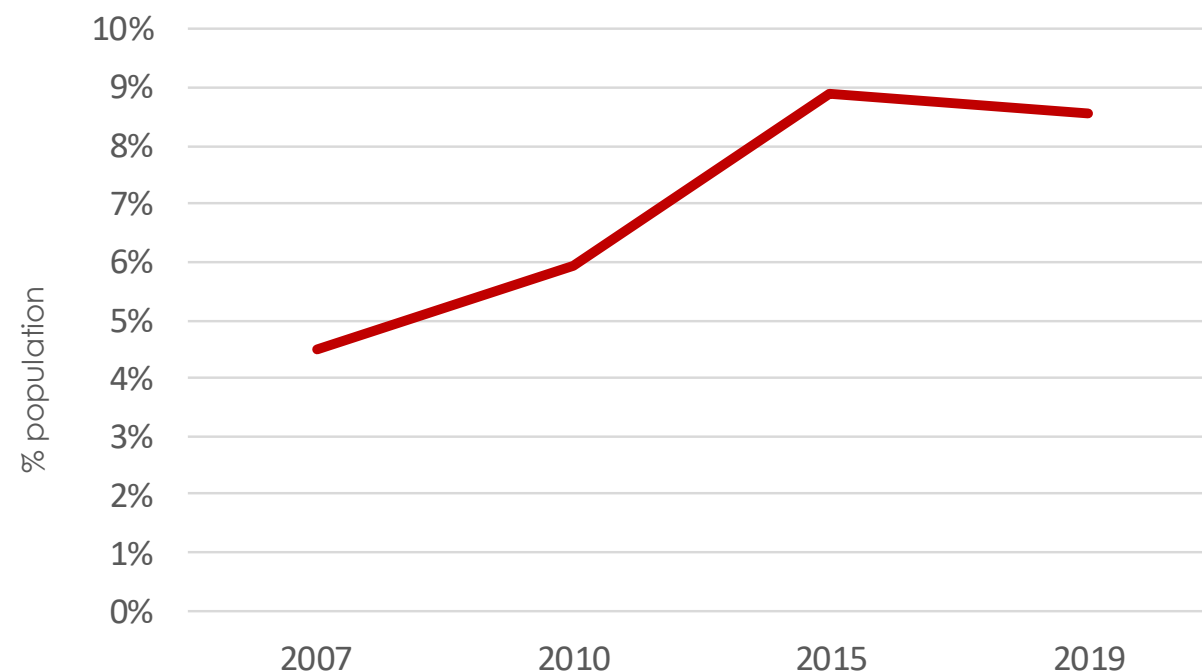
Deprivation across Essex communities



The number of Essex residents living in deprived areas has doubled since 2007

- More than 123,000 (8.6%) live in areas which amongst England's most deprived 20%, compared to 60,000 in 2007
- Over 50,000 of these live in the most deprived 10% of areas, compared to c.12,000 in 2007
- This shift began between 2007 and 2010 but accelerated between 2010 and 2015.
- The number living in deprived communities has been relatively stable between 2015 and 2019.

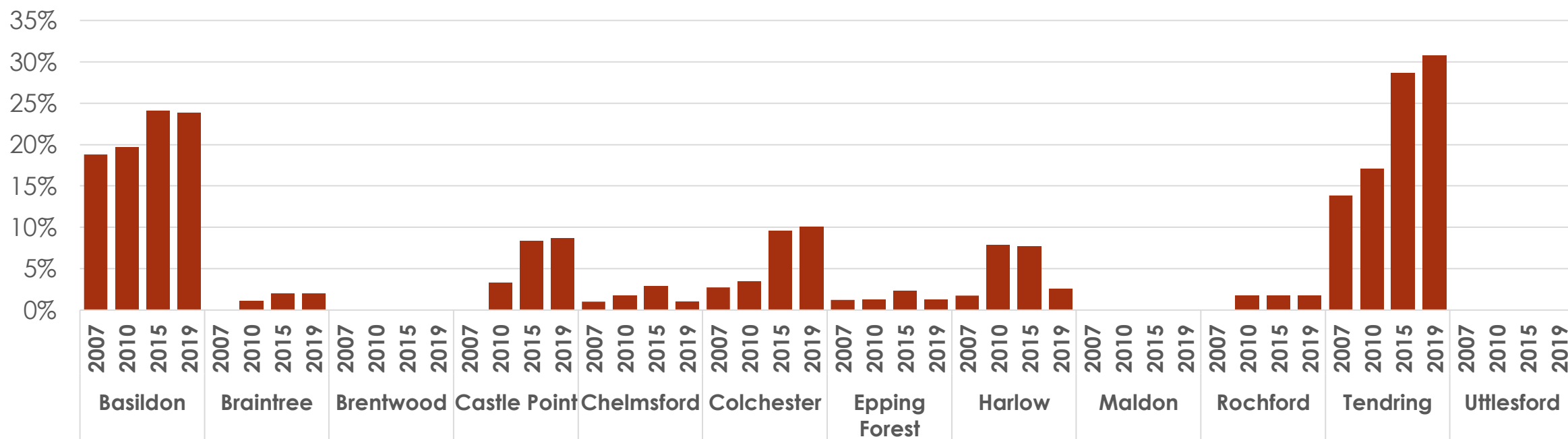
% population in Essex living in 20% most deprived areas



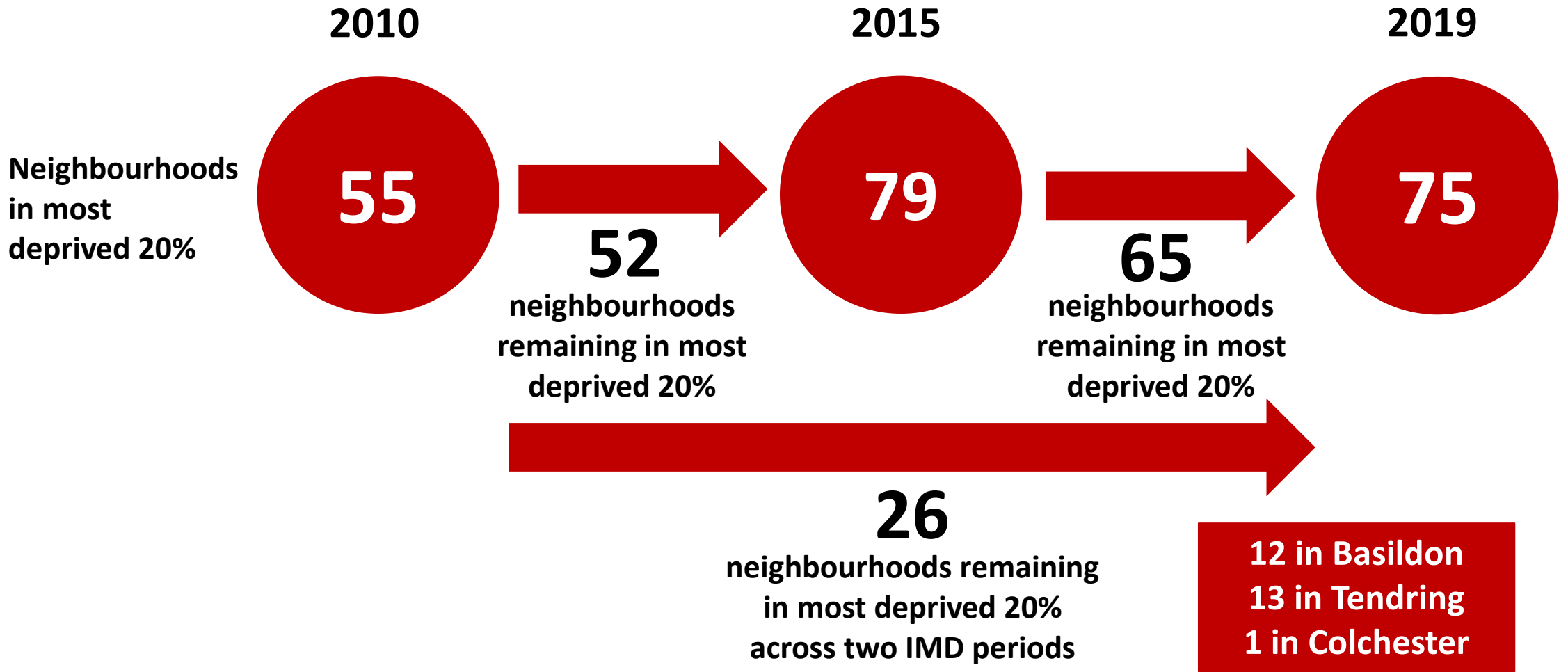
The extent of change is not uniform across Essex districts

- Between 2007 and 2015 the population living in the most deprived 20% of areas increased in almost all districts (Brentwood, Maldon and Uttlesford were exceptions)
- This trend continued between 2015 and 2019 in deprivation Tendring, Castle Point & Colchester
- But Harlow saw a substantial reduction in the proportion of residents impacted by deprivation – from fall 7.7% in 2015 to 2.5% in 2019

Proportion of population in most deprived 20% of neighbourhoods - Essex districts



There is a hard core of neighbourhoods which have been amongst the most deprived since before 2010



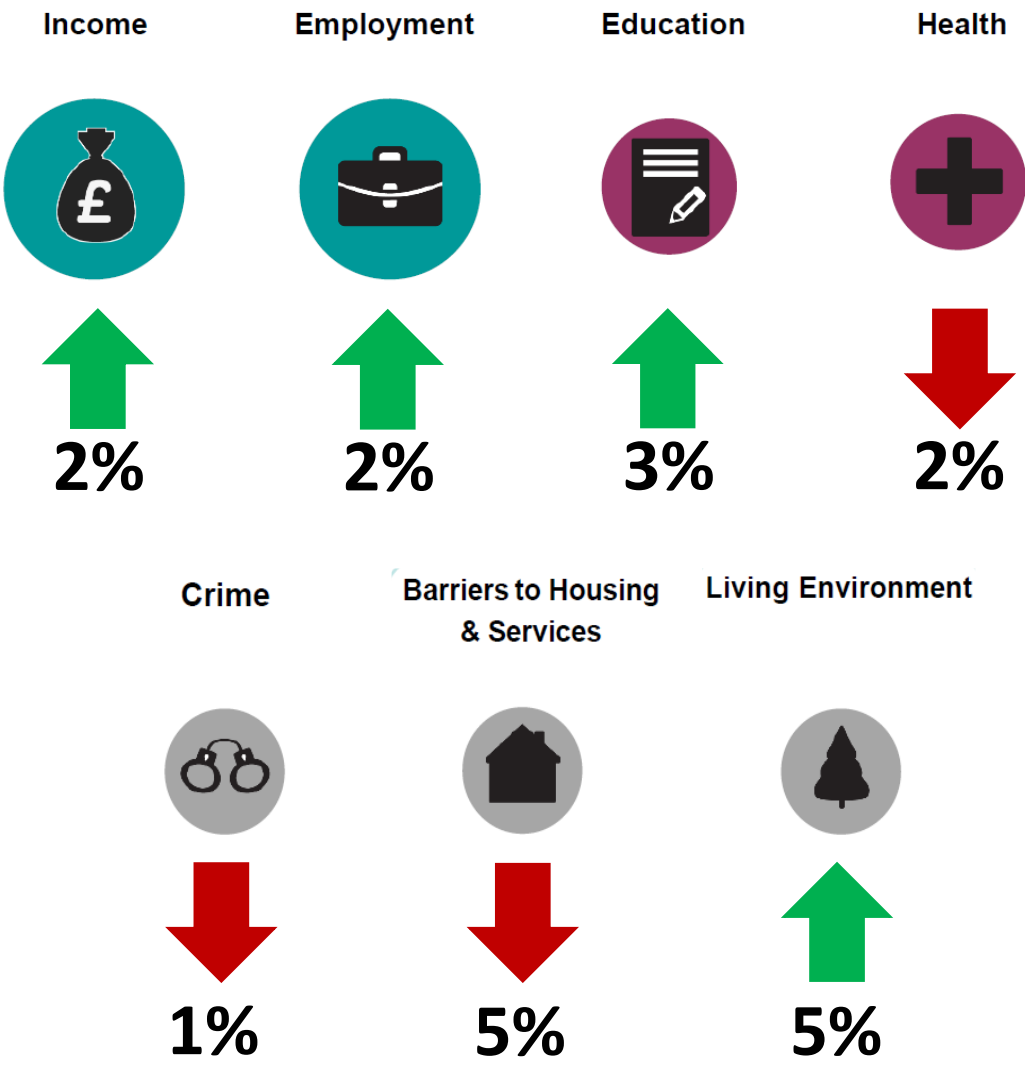
What is causing these changes?

The most significant structural factors affecting deprivation are incomes and employment.

But recent changes in deprivation across Essex stem from small changes across all domains. The most significant being:

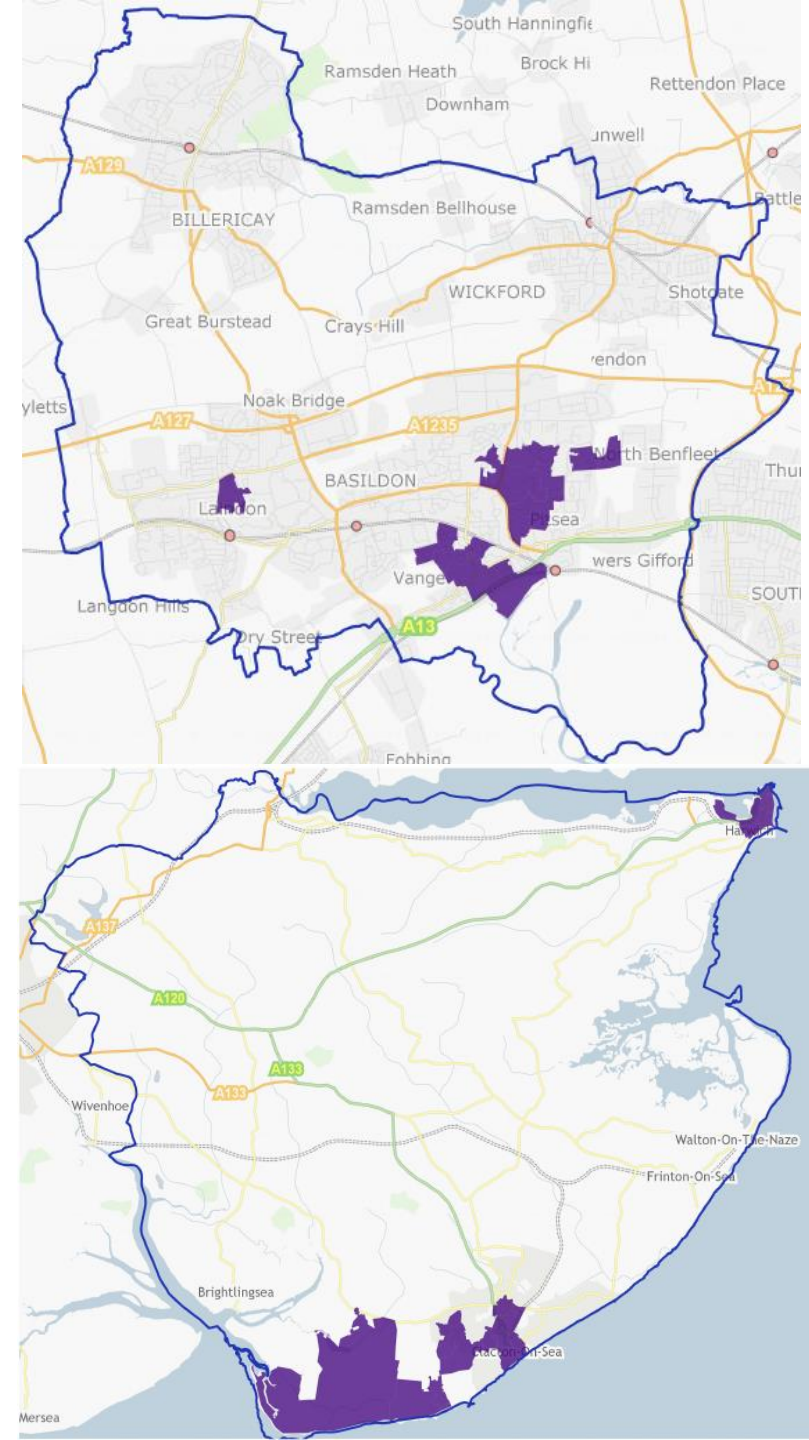
- barriers to housing and local services
- the quality of the living environment
- improvements in education.

Percentage movement in domain rankings 2015-19



The drivers of deprivation vary substantially between neighbourhoods.

- Basildon & Tendring have the majority of neighbourhoods ranked among the most deprived
- Biggest drivers of deprivation for **Basildon** (2015-19):
 - Crime
 - Barriers to housing and services.
- For the most deprived areas in **Tendring**, the biggest drivers are:
 - Crime
 - Health
 - Income

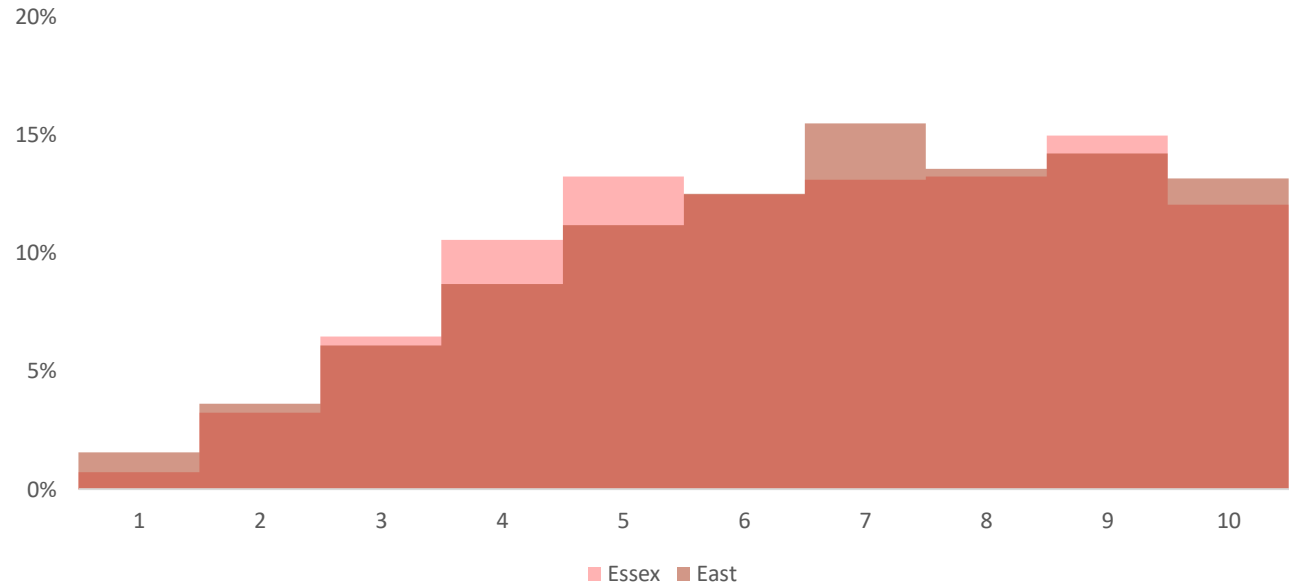


Deprivation and vulnerable groups

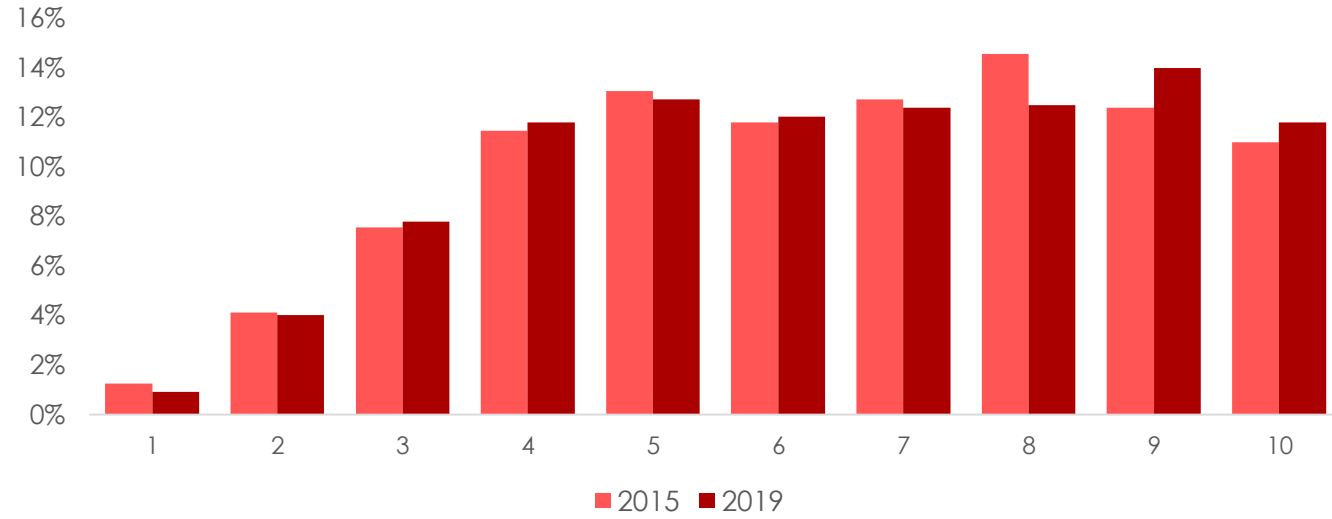
Income Deprivation Affecting Older People Index (IDAOPI)

- 14,800 Older People live in the 20% most deprived of neighbourhoods
- Slightly better than the East of England picture
- There has been little change in the extent to which deprivation impacts on older people between 2015 and 2019

% of older people by IDAOPI decile, Essex vs East of England

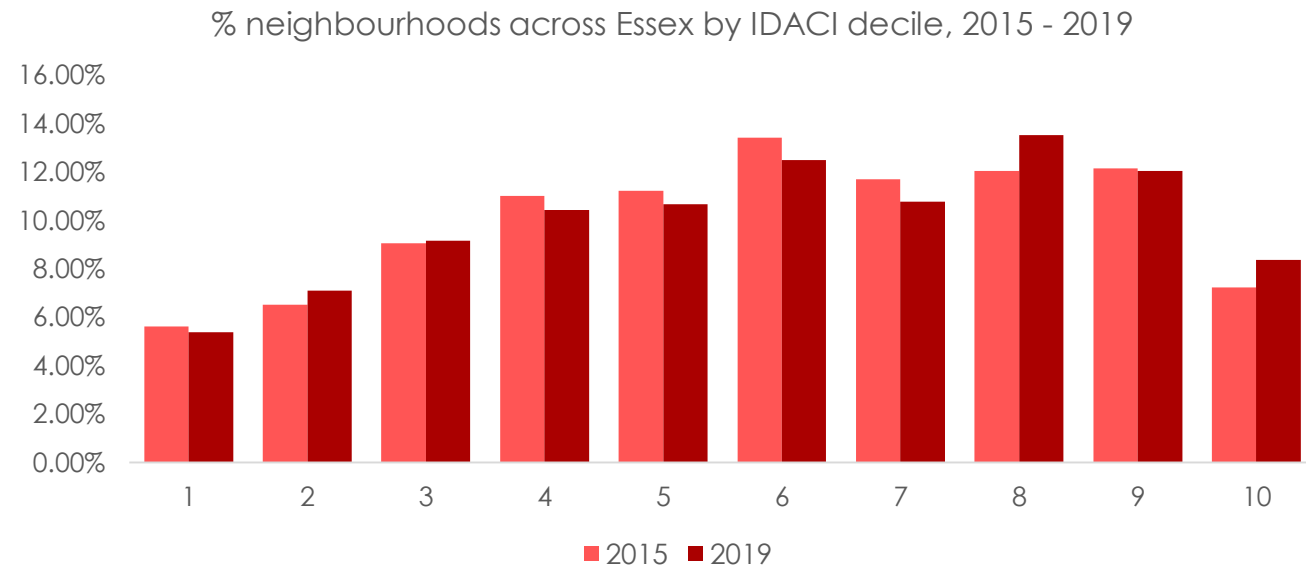
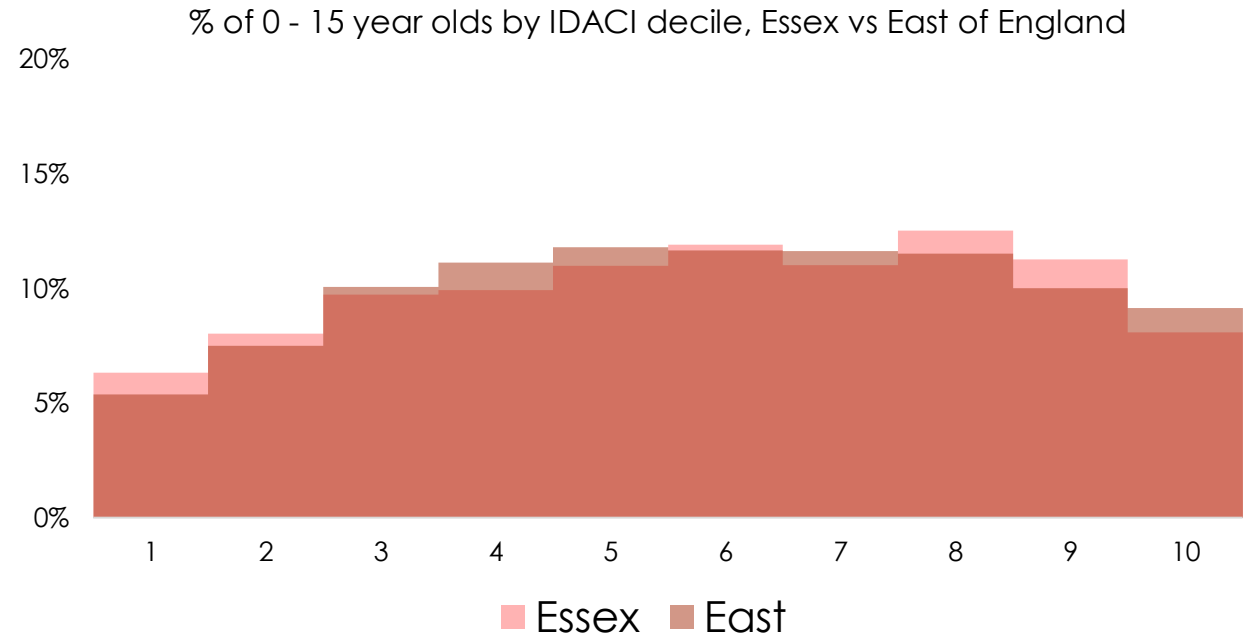


Proportion of LSOAs in IDAOPI deciles



Income Deprivation Affecting Children Index (IDACI)

- 38,600 children live in the most deprived 20% of neighbourhoods
- Essex is broadly similar to the East of England picture
- There has been little change in the extent to which deprivation impacts on children between 2015 and 2019



Movers and shakers

Top 10 nationally and across Essex

Neighbourhoods can sustain major shifts in their fortunes

- The tables below show the biggest positive and negative shifts
- The most significant factors behind major negative changes appears to be increasing crime and poorer health outcomes
- Further work is required to investigate the factors that have secured improvement.

Neighbourhood	IMD 2019 Decile	IMD 2007 Decile	2007 to 2019 difference in rank
Greenwich - Woolwich Pier	8	1	22329 (68%)
Islington - Holloway & Caledonian Road	8	1	21472 (65%)
Norwich Chapelfield	8	2	20425 (62%)
Holystone - Shiremoor (Tyneside)	9	3	20415 (62%)
Liverpool Princes Dock	8	2	19994 (61%)
Liverpool Queens Dock	7	1	19563 (60%)
Canary Wharf	7	1	19089 (58%)
Birmingham New Street & Arena	7	1	18719 (57%)
East Guisborough	10	4	18566 (57%)
Salford Quays	10	4	18459 (56%)

Neighbourhood	IMD 2019 Decile	IMD 2007 Decile	2007 to 2019 difference in rank
Peterborough - Hampton	3	9	-18005 (-55%)
South East Watton - Breckland	2	6	-15346 (-47%)
Aylesbury Vale - Central Buckingham	5	9	-14523 (-44%)
Cottingham - Hull	4	8	-13838 (-42%)
Mildenhall - West Suffolk	5	9	-13580 (-41%)
Portishead	6	10	-13188 (-40%)
Bromsgrove-Redditch	4	8	-13169 (-40%)
Lubenhall - Harborough	4	8	-12929 (-39%)
Whinney Hill - Durham	5	9	-12057 (-37%)
West Stowmarket	6	9	-11949 (-36%)

Some neighbourhoods in Essex have experienced major decline – falling down the IMD by as much as five deciles.

- Those areas which have sustained improvements could yield lessons on effective routes to tackle deprivation
- Further work is required to investigate the factors that have led to improvement and decline at the local level.

Neighbourhood	IMD 2019 Decile	IMD 2007 Decile	2007 to 2019 difference in rank
Burnham-on-Crouch North	7	5	8202 (25%)
University Quays	6	4	8123 (25%)
Herongate, Ingrave and West Horndon	9	6	8070 (25%)
Highwoods	9	7	7638 (23%)
Flitch Green & Little Dunmow	10	8	7215 (22%)
Warley	6	4	6660 (20%)
Brentwood West	9	7	5556 (17%)

Neighbourhood	IMD 2019 Decile	IMD 2007 Decile	2007 to 2019 difference in rank
Canvey Island South	1	5	-11743 (-36%)
Waterhouse Farm	5	8	-9888 (-30%)
Great Dunmow North	6	9	-9437 (-29%)
Lee Chapel North	2	4	-9240 (-29%)
Shrub End	6	9	-9037 (-28%)
Canvey Island Winter Gardens	3	6	-8472 (-26%)
Canvey Island West	6	8	-8231 (-25%)
Witham Central	5	8	-8207 (-25%)
Pitsea South East	4	7	-8147 (-25%)

Impact of deprivation

Relationship between IMD19 and Essex residents outcomes and ECC services



Adult Social Care



Children Social Care



Education & Attainment



Hospital admissions



Health

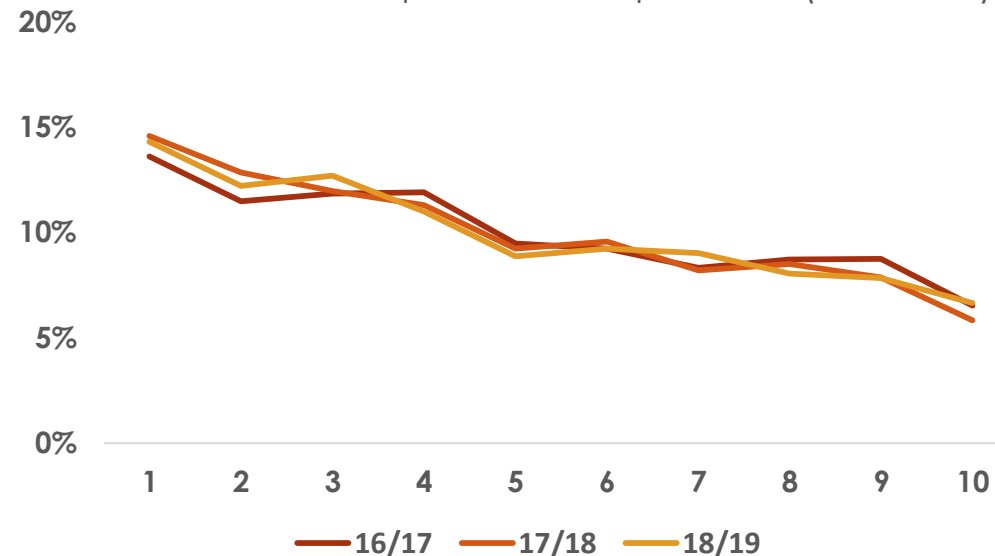


Deprivation & Adult Social Care

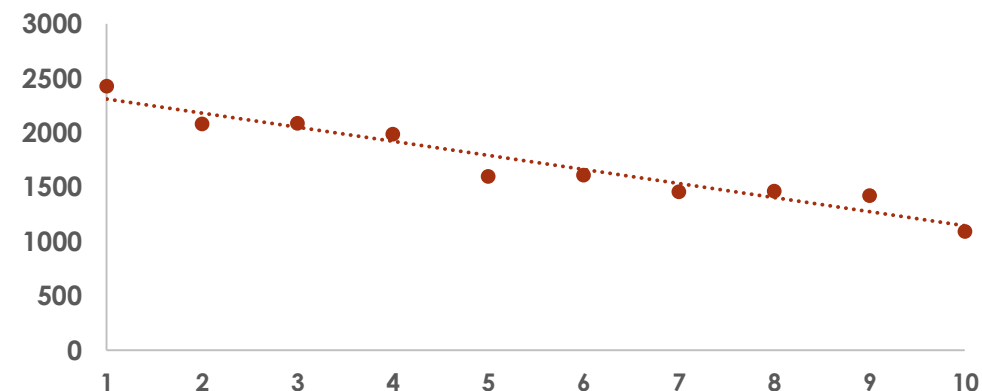
Impact of deprivation on adult social care volume

- **Strong link** between deprivation and ASC starters.
- More deprived areas are contributing more starts.
- **No change in 3 years.** Not better at preventing people in the deprived areas now than before.
- **30%** of the total new ASC starts come from **deprived 20%**.
- The majority of **ASC volume** comes from more deprived areas.

% number of new starts in the years 16/17, 17/18 and 18/19 across the quintiles of deprivation (IMD 2019)



Total new starters (2016/17 – 2018/19), by deprivation score deciles



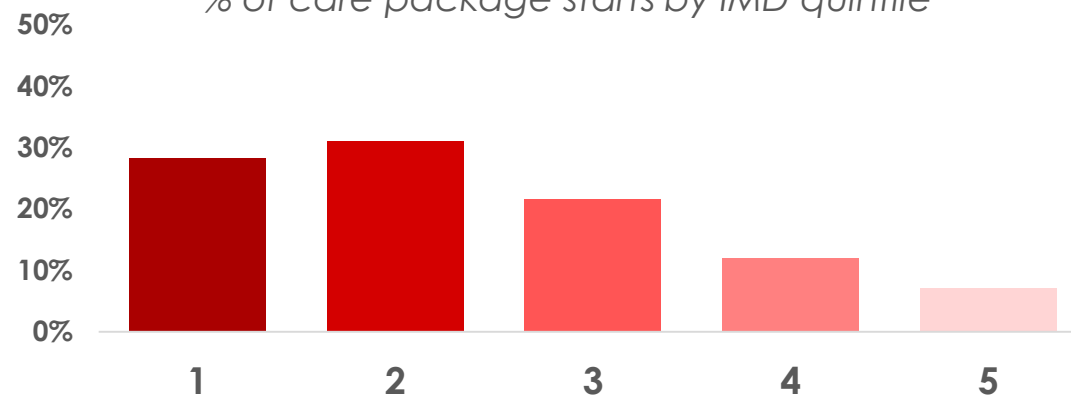


Deprivation & Children's Social Care

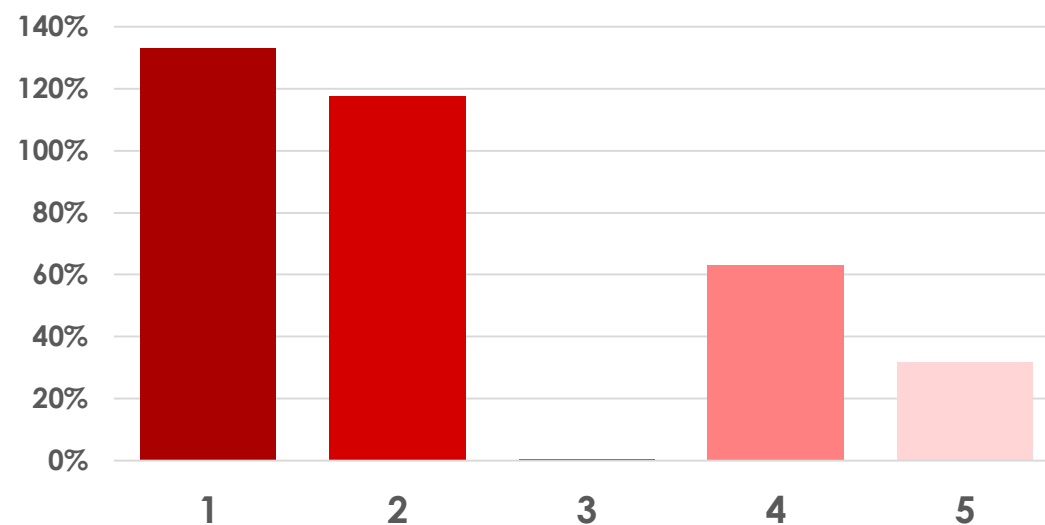
Impact of deprivation on children in care – care placements

- There are a **greater number of children in care** in the **most deprived** quintiles vs the least deprived quintiles in Essex.
- **30%** of care plans come from the most deprived quintile.
- The number of care plans is increasing across Essex, and is **rising 3x faster in deprived areas**.
- There is no significant relationship between levels of deprivation and the complexity of child care plans.

% of care package starts by IMD quintile



% of care plans is across Essex deprivation quintiles (2014-18)



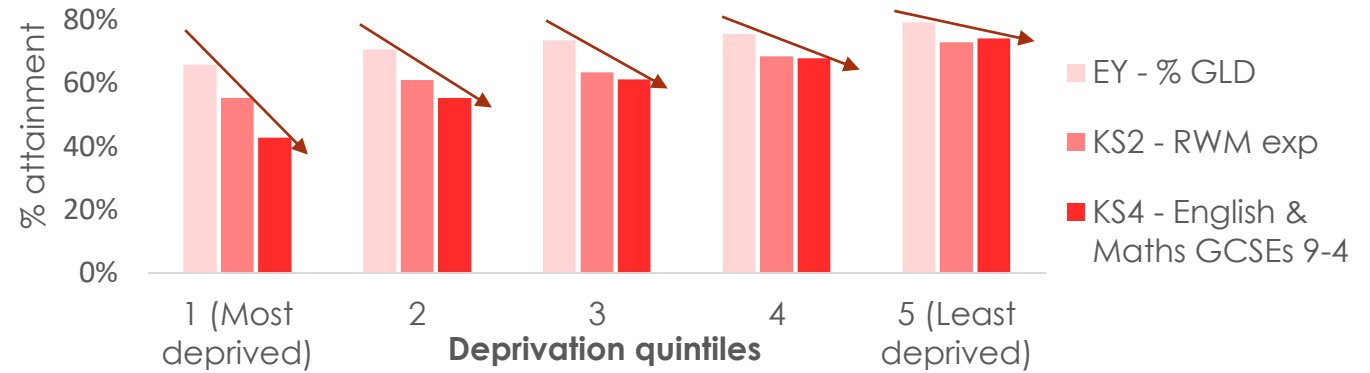


Educational attainment

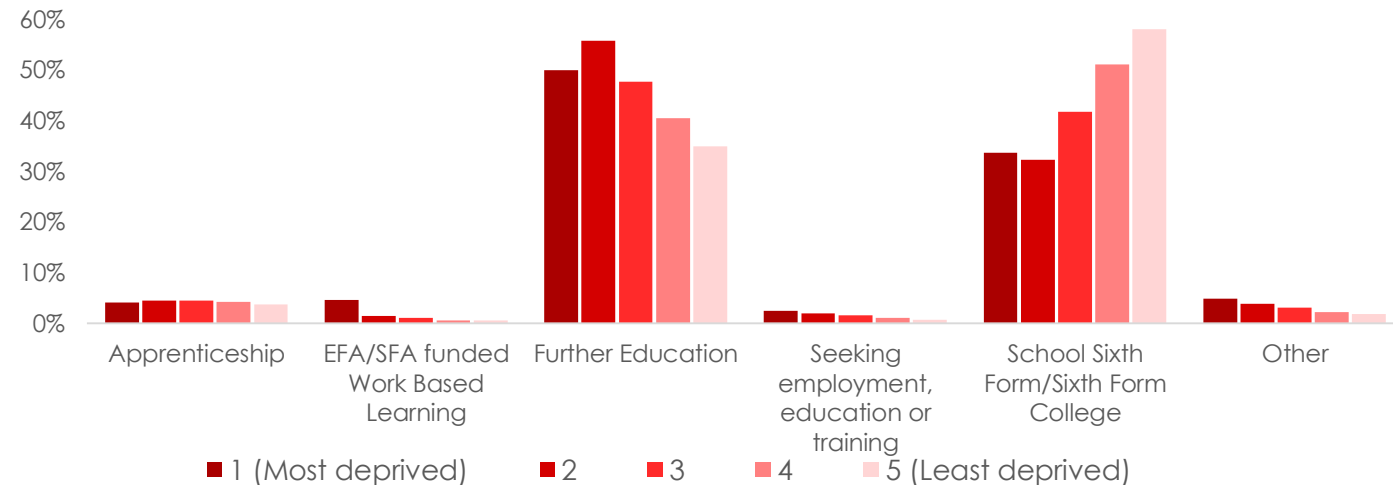
Analysis of attainment through various education stages and deprivation across Essex (2018 data)

- **Disparity** between **attainment** of pupils from the **most deprived** and least deprived.
- **66%** of pupils from the most deprived 20% achieve a **GLD** vs **79%** in the least deprived
- More pronounced in **KS4** where **43%** of pupils achieved 9-4 vs **74%** of pupils in the least deprived.
- **10%** more pupils attending **college and sixth form** in the least deprived 20% in Essex.
- **More pupils** seeking **employment** and **EFA/SFA funded** work based learning in the most deprived quintile.

Educational attainment of pupils in Essex in 2018 (IMD19 quintiles)



Destinations of pupils after year 11 in 2018 (IMD19 quintiles)



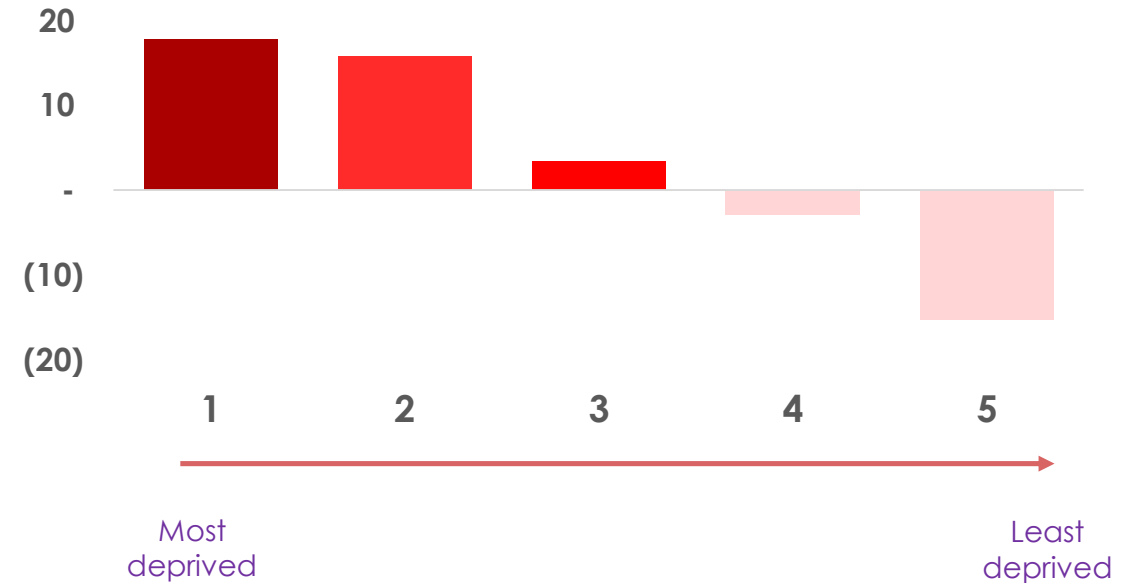


Deprivation & Hospital Admissions

Quantification of hospital admissions

- There is a **link** between deprivation and emergency admissions in Essex.
- **Higher** in areas of high **deprivation** and lower in areas of low deprivation.
- Additional **40 emergency admissions per 1000 people** in the most deprived quintile vs the least.
- Increased admissions cause a significant cost burden on health services and costs increase significantly with multimorbidity.

Difference in emergency admissions in areas of Essex. Essex average vs quintile average





Deprivation & Health Outcomes

Deprivation associated with GP populations and their health

- **18 conditions** from the **GP register (QOF)** assessed against aggregated GP populations.
- **180+ GP** practices assessed for prevalence against respective deprivation areas.
- Data shows the **highest prevalence** of disease conditions in patients in the **20% most deprived** of GP areas (16 of 18 conditions).



Respiratory progressive diseases (COPD): 86.78% higher



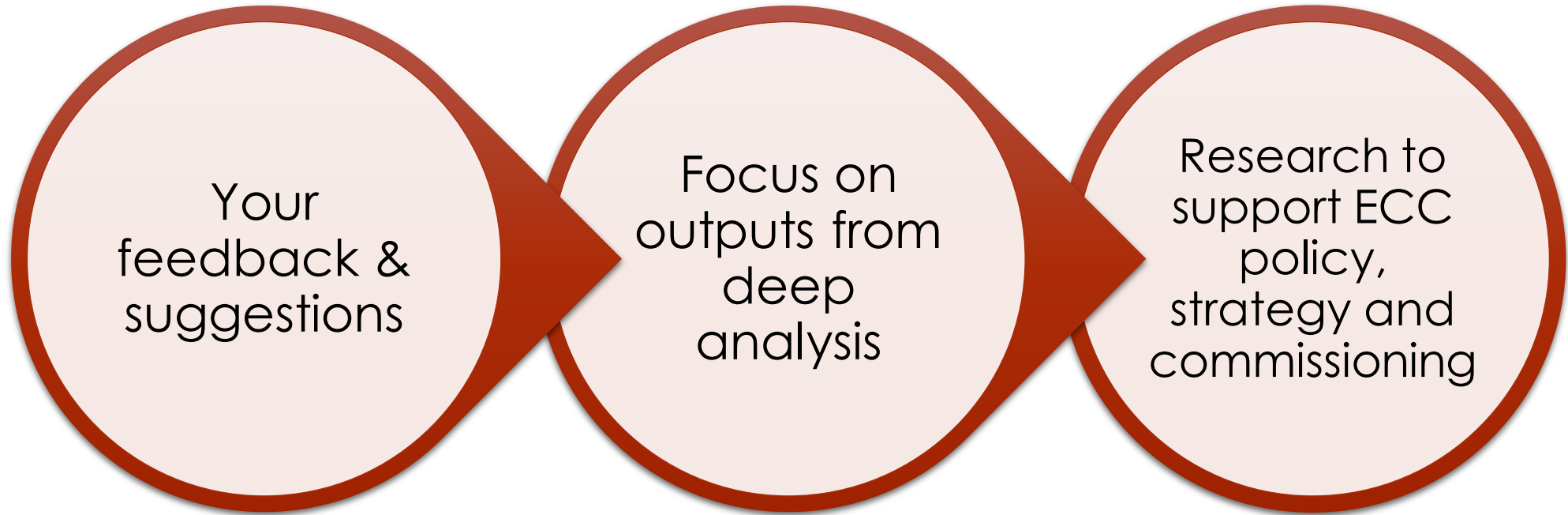
Mental Health Conditions and **depression** 69.06% and 22% higher respectively



Obesity (Age 18+): 52.75% higher



Diabetes Mellitus (Age 17+): 45.76% higher



1. Investigate neighbourhoods that have seen greatest change, in Essex and nationally, to identify drivers and learn lessons
2. Further explore the nature and drivers of deprivation in Essex's most deprived neighbourhoods
3. Build on work to explore the link between deprivation and different forms of service demand
4. Develop the next phase of work with you

