

HOUSING DEVELOPMENT PLANS FOR PNA**Plan period to 2041 (beyond the lifetime of this PNA)**

Sites that contribute to supply for the plan period are set out in each areas Land Supply Reports.

The supply can be demonstrated by sites that either have deliverable planning consents already in place, deliverable Housing & Employment Land Availability Assessment sites and known Town Centre regeneration programme sites.

All significant developments have access to existing pharmaceutical services either in the locality or in the neighbouring localities and no gaps in the provision of pharmaceutical services are identified.

Site analysis for PNA consists of strategic housing allocation of 200+ dwellings, site with planning permission and in adopted and emerging Local Plans.

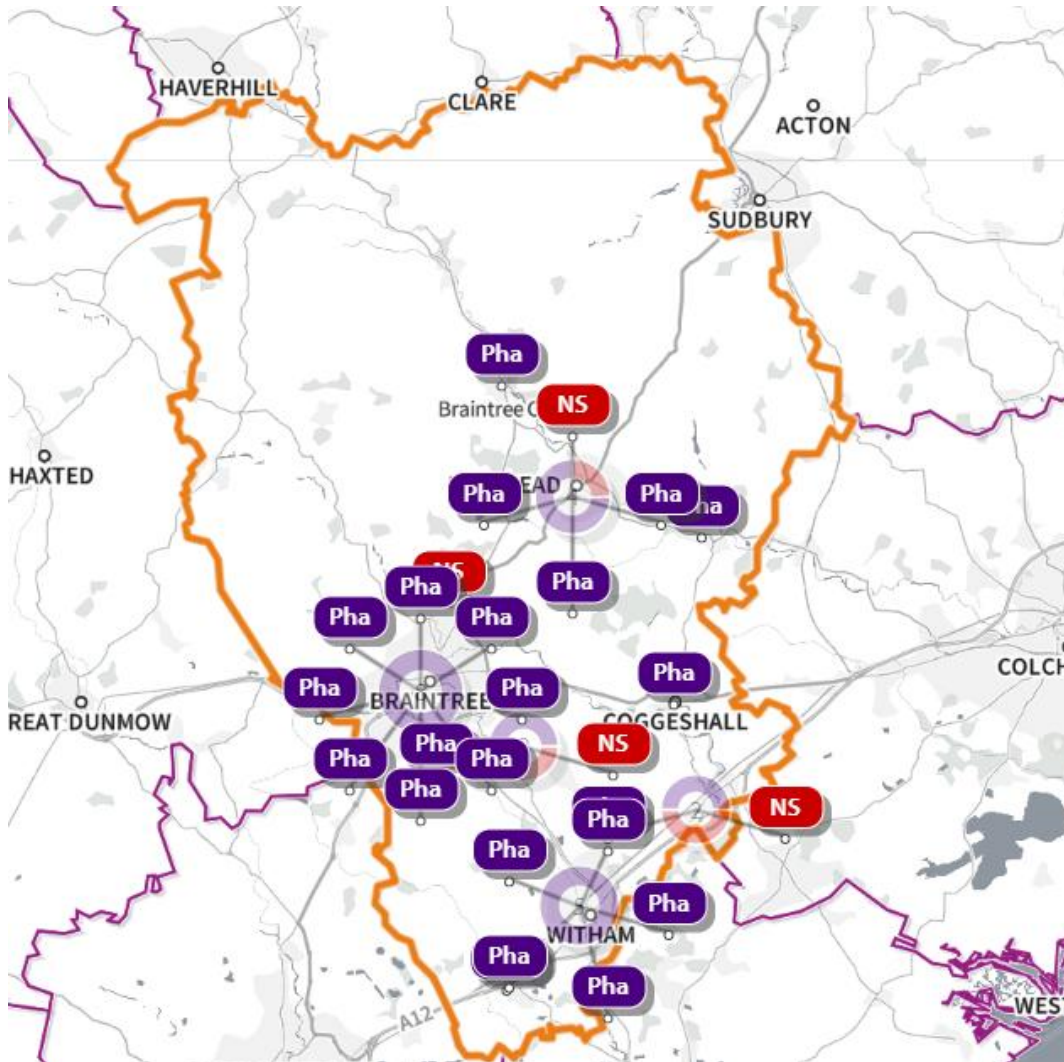
1. STRATEGIC SITES IN LOCAL PLANS (200 allocations or more)¹**1.1 BASILDON**

There have been no newly identified sites within Basildon since the previous PNA (2022) that are strategic housing allocations of 200+ units and have planning permission during the analysis for the PNA (2025).

¹ Source- local plans for each district, borough, or city council in the Essex HWB area

1.2 BRAINTREE

Land at Long Green Cressing
Land off Church Street, North of Grove Field, High 265
Bournebridge Hill Halstead
Land North of London Road Kelvedon



SHAPE Place • Pharmacy • Added location

Note: NS on map represents location of proposed New Settlements

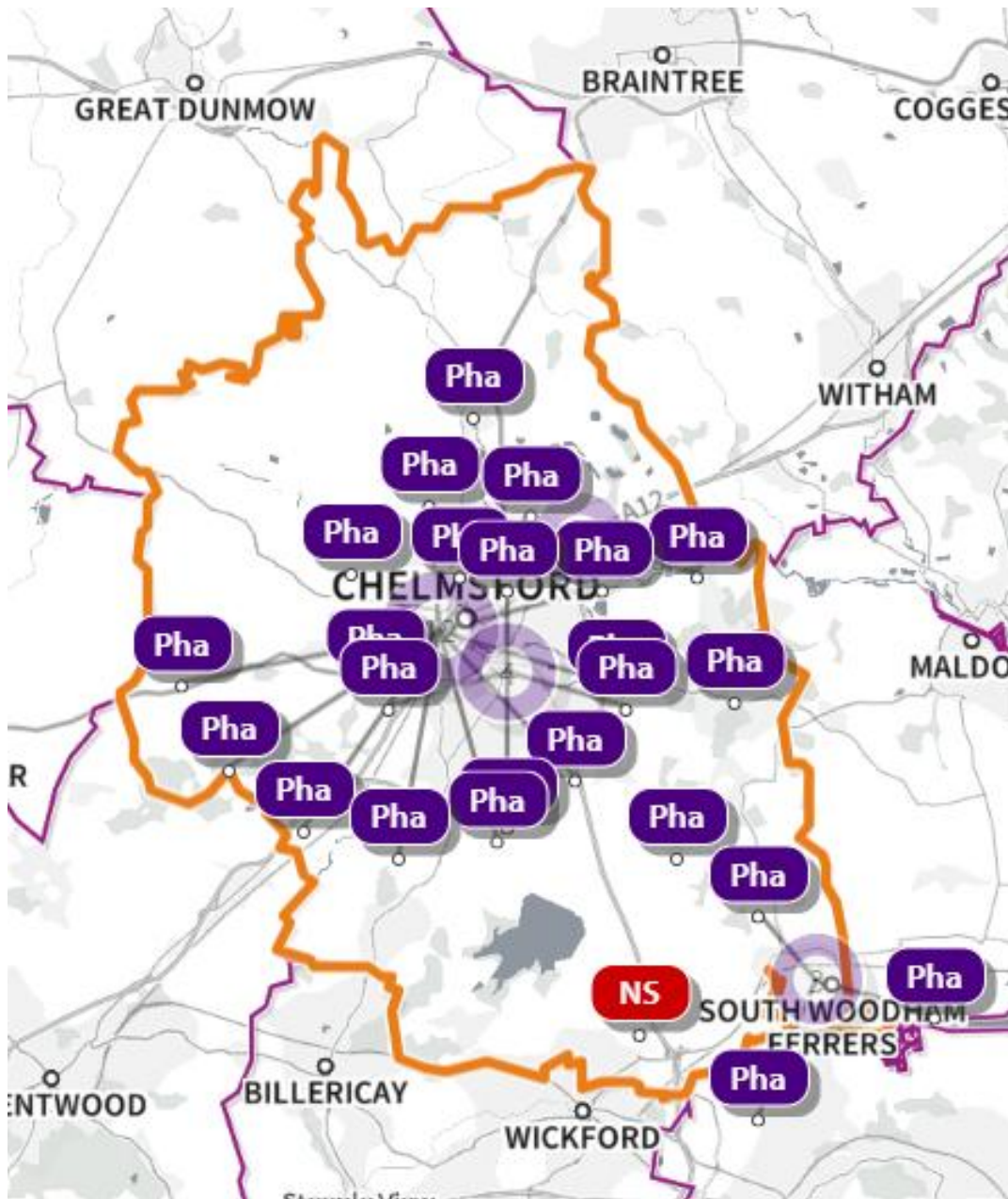
1.3 BRENTWOOD

There have been no newly identified sites within Brentwood since the previous PNA (2022) that are strategic housing allocations of 200+ units and have planning permission during the analysis for the PNA (2025).

1.4 CASTLE POINT

There have been no newly identified sites within Castle Point since the previous PNA (2022) that are strategic housing allocations of 200+ units and have planning permission during the analysis for the PNA (2025).

1.5 CHELMSFORD
Former Runwell Hospital

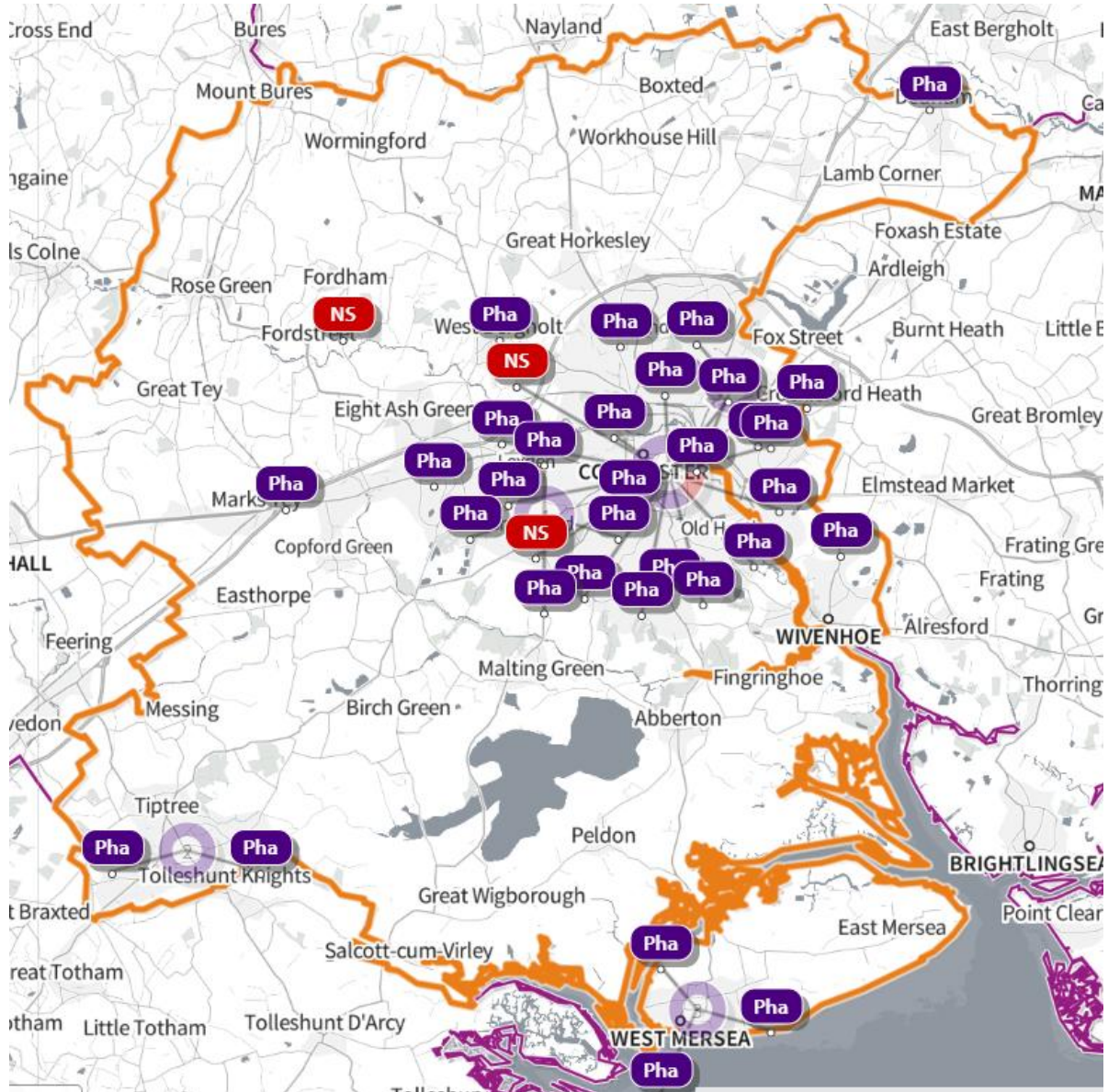


[SHAPE Place • Pharmacy • Added location](#)

Note: NS on map represents location of proposed New Settlements

1.6 COLCHESTER

Mill Road Extra Care, Land South of Axial Way
Defence Support Group (DSG), Flagstaff Road
R/O Colchester Centre, Hawkins Road



[SHAPE Place • Pharmacy • Added location](#)

Note: NS on map represents location of proposed New Settlements

1.7 Epping Forest

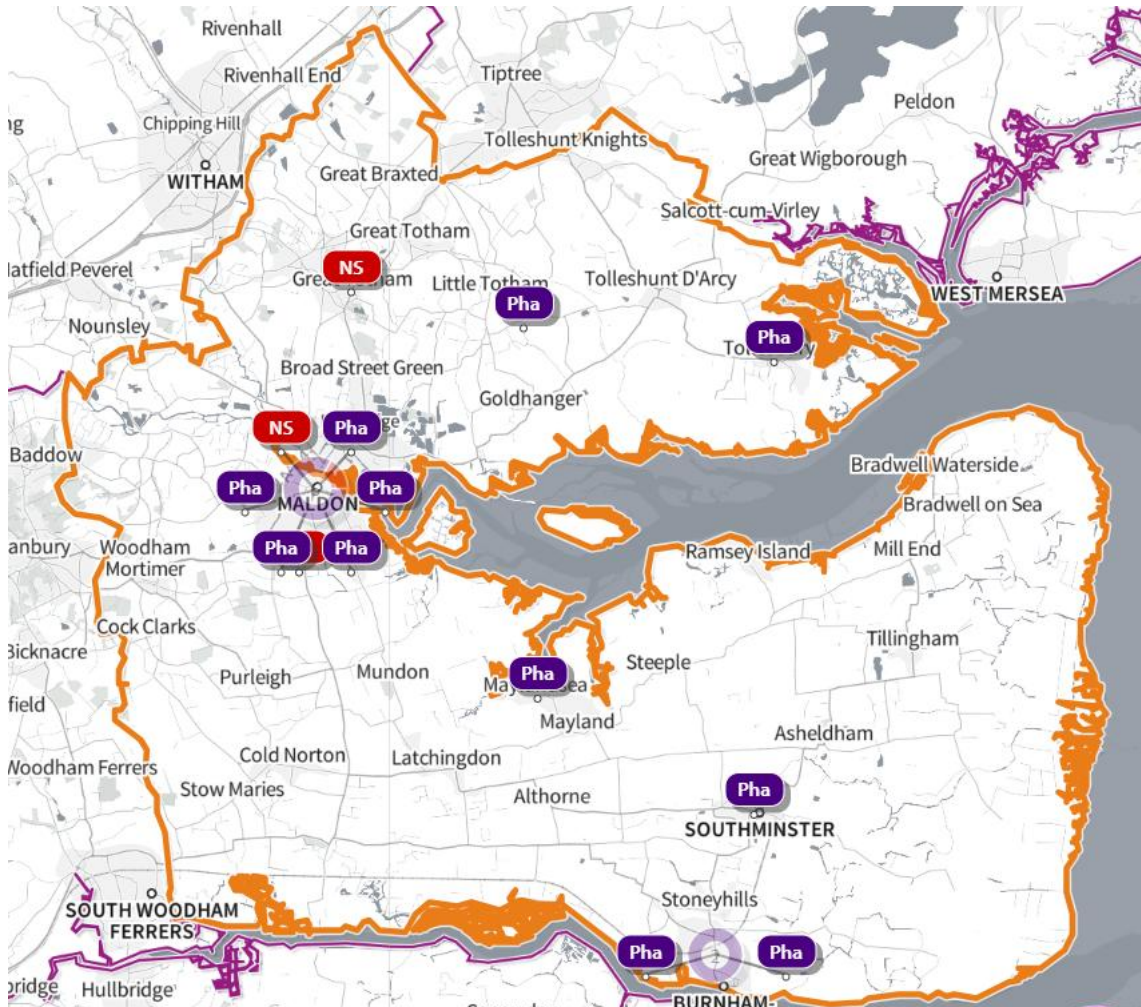
There have been no newly identified sites within Epping Forest since the previous PNA (2022) that are strategic housing allocations of 200+ units and have planning permission during the analysis for the PNA (2025).

1.8 Harlow

There have been no newly identified sites within Harlow since the previous PNA (2022) that are strategic housing allocations of 200+ units and have planning permission during the analysis for the PNA (2025).

1.9 Maldon

Land East of Wycke Hill Maldon Essex
South Maldon Garden Suburb
North Heybridge Garden Suburb

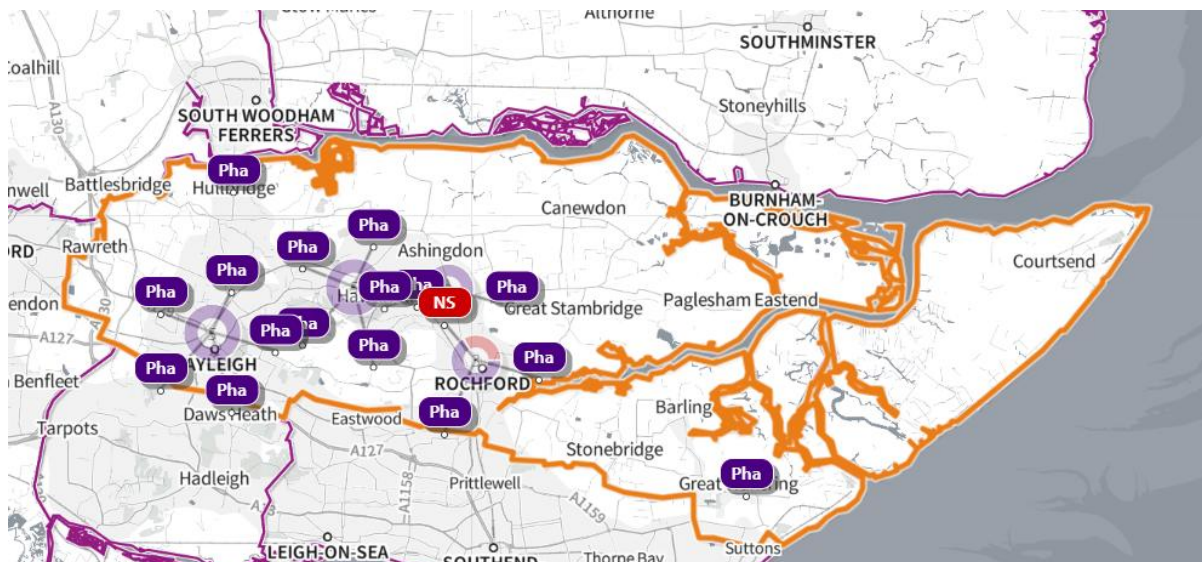


[SHAPE Place • Pharmacy • Added location](#)

Note: NS on map represents location of proposed New Settlements

1.10 Rochford

Land East of Ashingdon Road And North of Rochford, Garden Way, Rochford

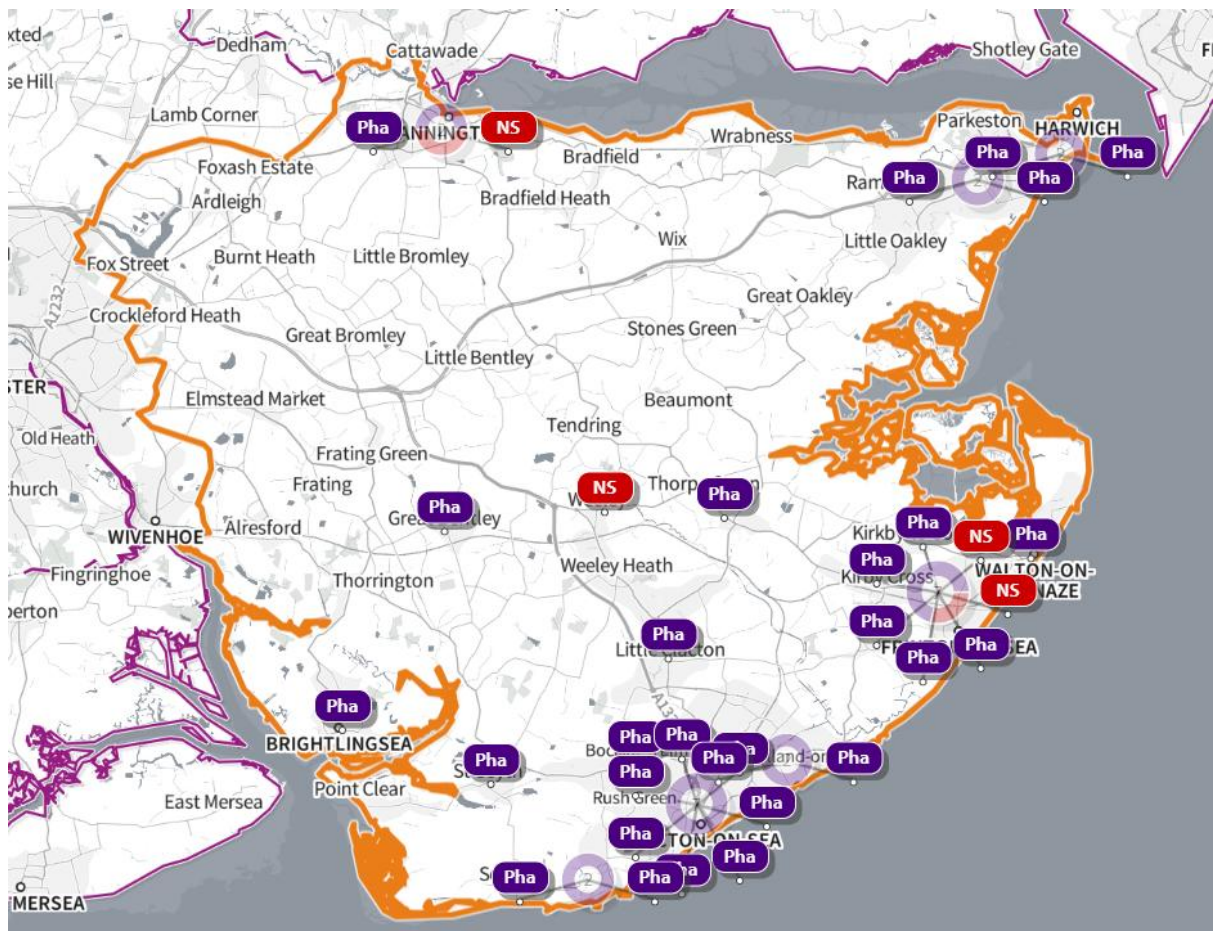


[SHAPE Place • Pharmacy • Added location](#)

Note: NS on map represents location of proposed New Settlements

1.11 Tendring

- Finches Park, Kirby Cross
- Samphire Meadow, Frinton
- Manningtree Park, Long Road
- Barleyfields, Land South of Thorpe Road

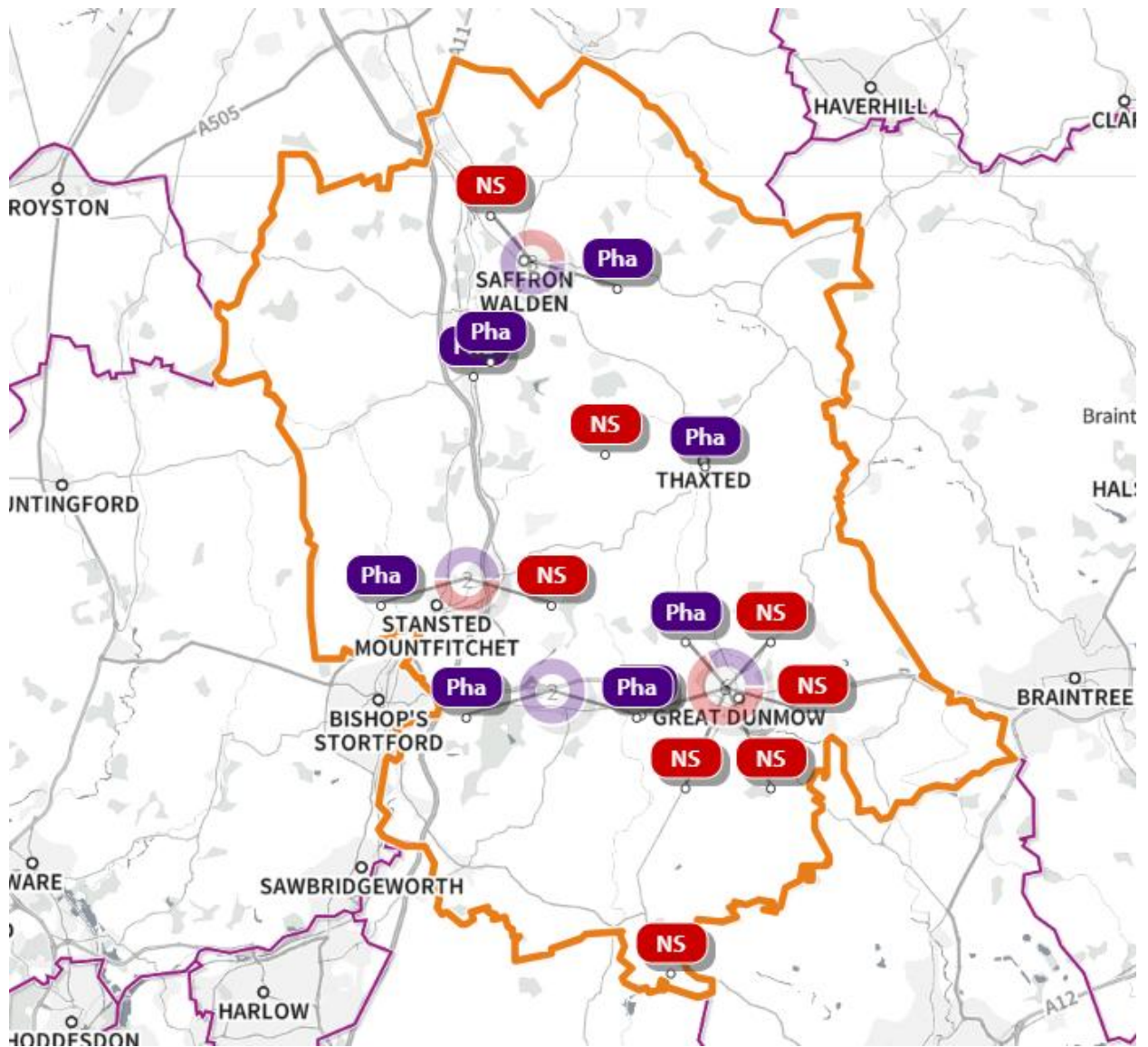


SHAPE Place • Pharmacy • Added location

Note: NS on map represents location of proposed New Settlements

1.12 Uttlesford

- Land East Of Highwood Quarry Little Easton
- Land South of Stortford Road, Dunmow
- Land at Smiths Farm, Chelmsford Road, Great Dunmow (West of Chelmsford Road)
- Land To The North West of Henham Road Elsenham
- Land South Of (East Of Griffin Place) Radwinter Road Swards End Essex
- Sector 3, Woodlands Park, Great Dunmow
- Helena Romanes School Parsonage Downs Dunmow
- Land East of Station Road, Elsenham



SHAPE Place • Pharmacy • Added location

Note: NS on map represents location of proposed New Settlements