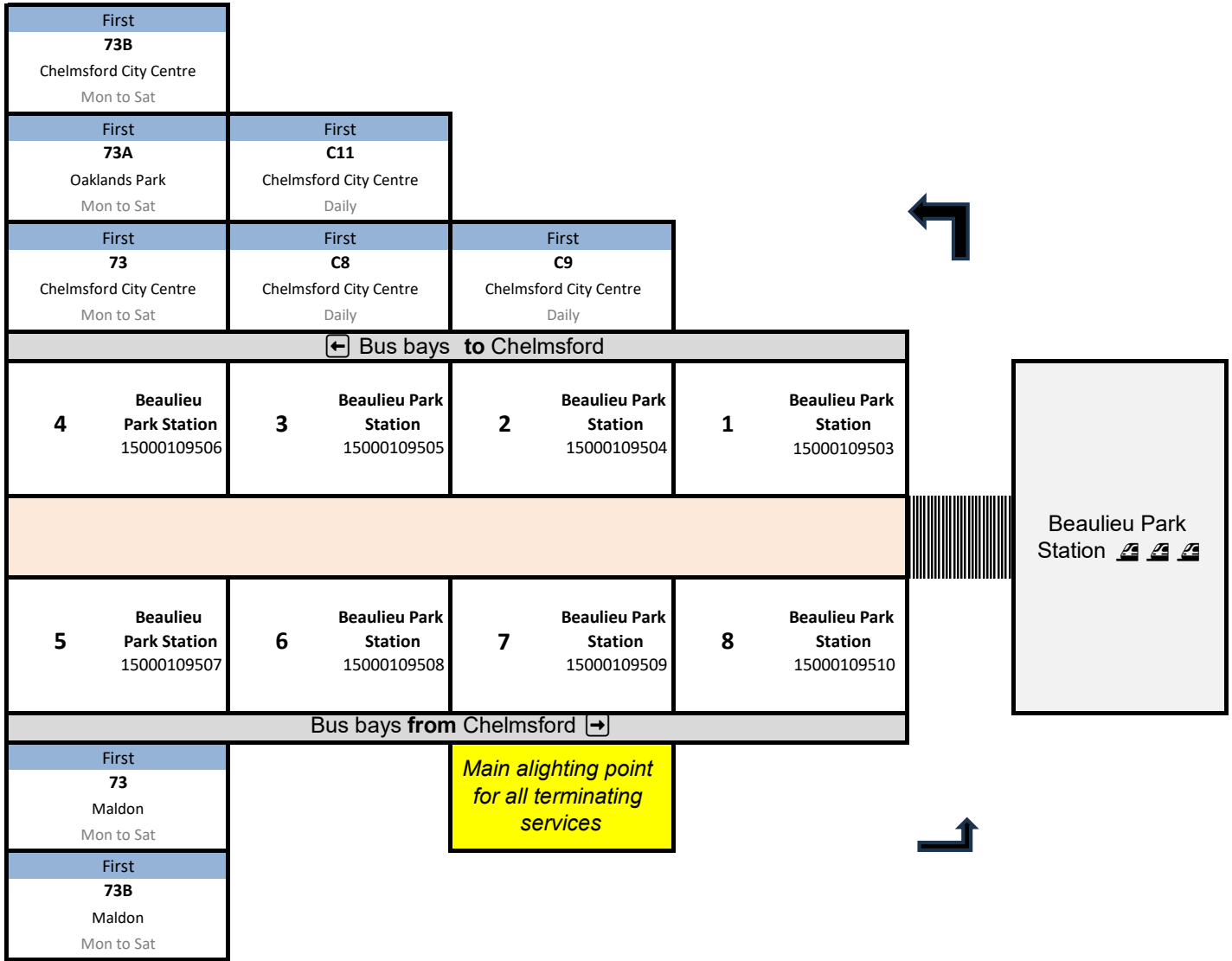


Beaulieu Park Station

Last Amended: 21/08/2025
 Last Change Date: 26/10/2025
 Comment:
 Last Annual Review 21/08/2025



Notes:

- Bay 1 & Bay 8 are 'ghost' bays. These are not operational or have cages, and are for future use and NaPTAN coding only.
- All **northbound and Chelmsford services** must set down at the alighting point prior to picking up at their respective departure bays. This ensures all passengers follow a natural Pedestrian Desire Line to the crossing framed by the canopy support partitions and the crossing itself. Setting down on the north side may incur a PDL across the North East corner across the running lanes, reducing safety.